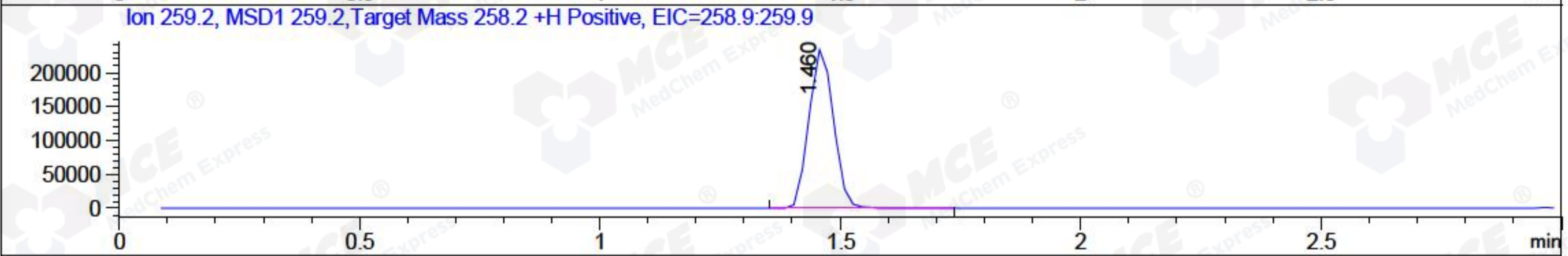
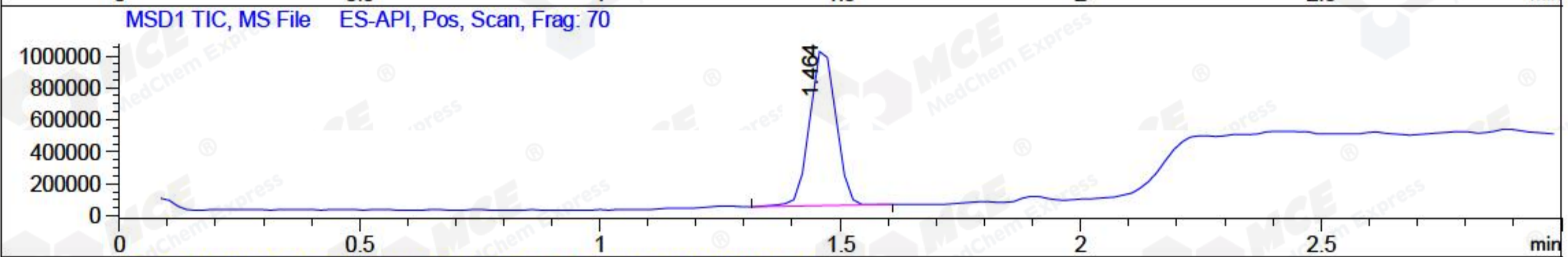
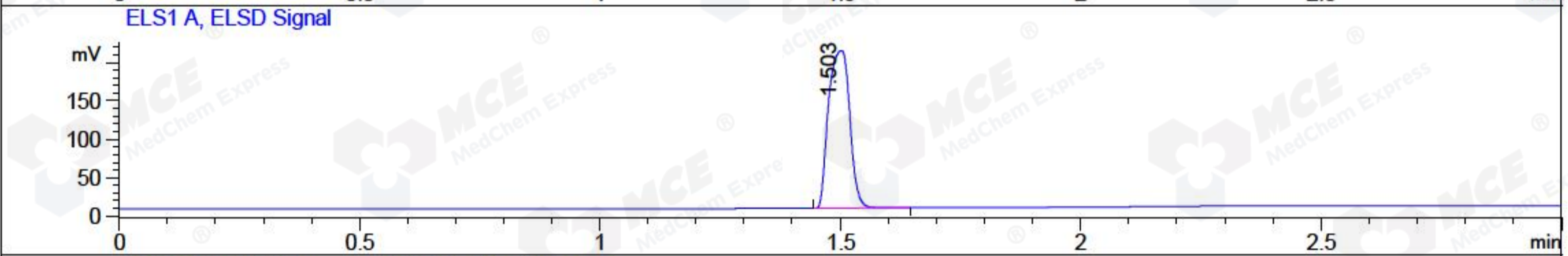
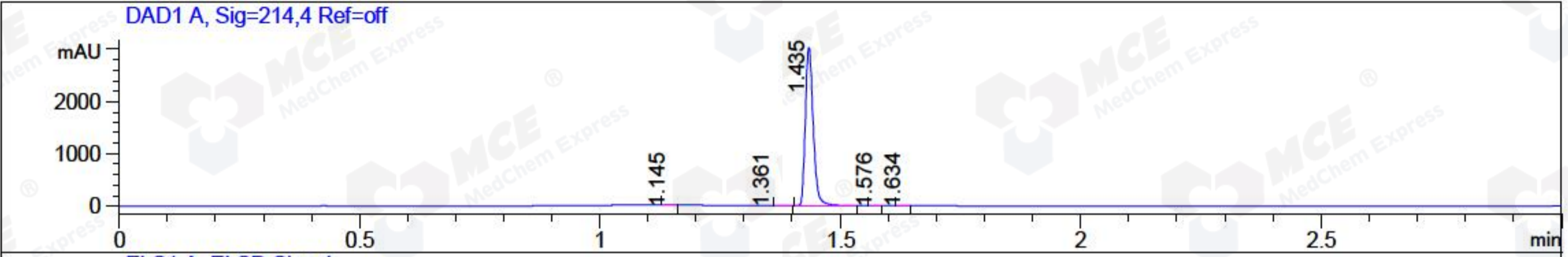


File ..\Data\20171222\20171222\CPK2017-D21-08930.D Tgt Mass (CHM):  
 Injection Date : 22 Dec 17 2:34 pm +0800 Seq. Line : 54  
 Sample Name : CPK2017-D21-08930 Location : P1-C-09  
 Acq. Operator : SYSTEM Inj : 1  
 Spec. Reported : MS Integration Inj Volume : 1 ul  
 Acq. Method : D:\LCMS03\Data\20171222\20171222\1-POS-3MIN.M  
 Analysis Method : D:\LCMS03\Data\20171222\20171222\1-POS-3MIN.M  
 Catalog No : HY-14658 Batch#08930  
 Method Info : Mobile Phase: A: water(0.01%TFA) B:ACN(0.01%TFA)  
 Gradient: 5% to 95%B within 1.3 min  
 Flow Rate : 1.8ml/min  
 Column :SunFire C18, 4.6\*50mm,3.5um A-RP-186  
 Oven Temperature : 45C



Integration Results for DAD1 A, Sig=214,4 Ref=off

RetTim	Width	Area	Height	Area%	MS (+)
1.14	0.02	0.59	0.63	0.02	174
1.36	0.02	1.01	-0.02	0.03	174
1.43	0.02	3438.33	3029.51	99.91	259
1.58	0.02	0.66	0.64	0.02	174
1.63	0.02	0.75	0.61	0.02	233

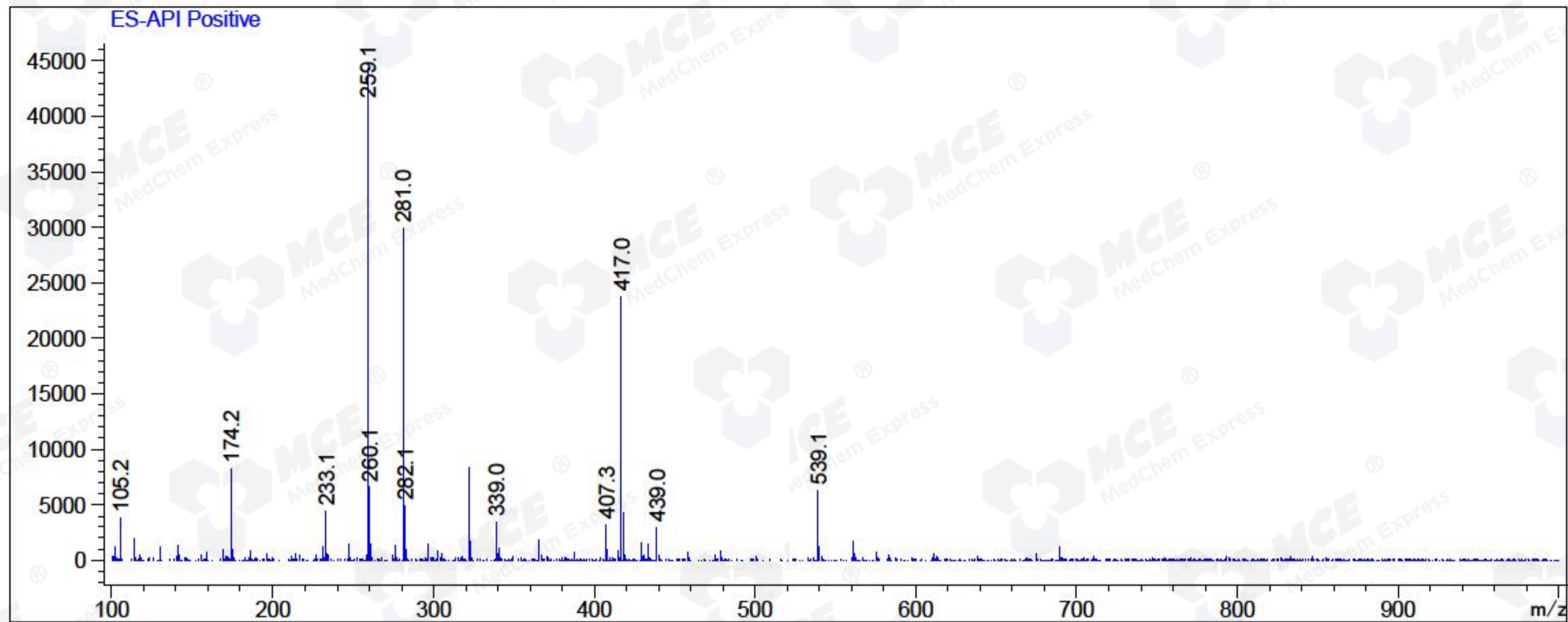
Integration Results for MSD1 TIC, MS File

RetTim	Width	Area	Height	Area%	MS (+)
1.46	0.06	3749495.50	999699.00	100.00	259



Ret. Time: 1.46

<<<< POSITIVE SPECTRA >>>>



\*\*\* End of Report \*\*\*