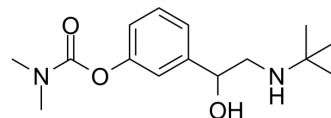


AChE/BChE-IN-3

Cat. No.:	HY-146663
CAS No.:	2410992-65-1
Molecular Formula:	C ₁₅ H ₂₄ N ₂ O ₃
Molecular Weight:	280.36
Target:	AChE
Pathway:	Neuronal Signaling
Storage:	Please store the product under the recommended conditions in the Certificate of Analysis.



BIOLOGICAL ACTIVITY

Description	AChE/BChE-IN-3 (BMC-1) is a dual AChE and BChE inhibitor with IC ₅₀ values of 6.08 μM and 0.383 μM against electric eel AChE (eIAChE) and equine serum BChE (eqBChE), respectively ^[1] .
IC ₅₀ & Target	IC ₅₀ : 0.383 μM (eqBChE), 6.08 μM (eIAChE) ^[1]

REFERENCES

[1]. Wu J, et al. Design, synthesis and biological evaluation of novel carbamates as potential inhibitors of acetylcholinesterase and butyrylcholinesterase. *Bioorg Med Chem.* 2020 Mar 1;28(5):115324.

Caution: Product has not been fully validated for medical applications. For research use only.

Tel: 609-228-6898

Fax: 609-228-5909

E-mail: tech@MedChemExpress.com

Address: 1 Deer Park Dr, Suite Q, Monmouth Junction, NJ 08852, USA