

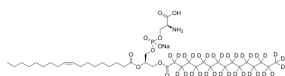
16:0-18:1 PS-d₃₁ (sodium)

Cat. No.: HY-146885S
CAS No.: 327178-96-1
Batch No.: 239393
Chemical Name: L-Serine, (2R)-3-[(1-oxohexadecyl-2,2,3,3,4,4,5,5,6,6,7,7,8,8,9,9,10,10,11,11,12,12,13,13,14,14,15,15,16,16,16-d31)oxy]-2-[[[(9Z)-1-oxo-9-octadecenyl]oxy]propyl hydrogen phosphate (ester), monosodium salt

PHYSICAL AND CHEMICAL PROPERTIES

Molecular Formula: C₄₀H₄₄D₃₁NNaO₁₀P
Molecular Weight: 815.18
Storage: Powder -20°C 3 years
In solvent -80°C 6 months
-20°C 1 month

Chemical Structure:



ANALYTICAL DATA

Appearance: White to off-white (Solid)
Purity: ≥99.0%
Conclusion: The product has been tested and complies with the given specifications.

Caution: Product has not been fully validated for medical applications. For research use only.

Tel: 609-228-6898

Fax: 609-228-5909

E-mail: tech@MedChemExpress.com

Address: 1 Deer Park Dr, Suite Q, Monmouth Junction, NJ 08852, USA