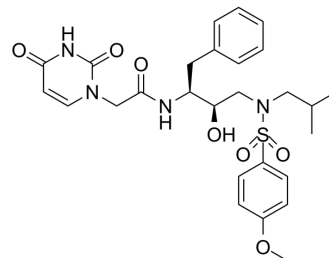


HIV-1 protease-IN-2

Cat. No.:	HY-146888
CAS No.:	2248124-46-9
Molecular Formula:	C ₂₇ H ₃₄ N ₄ O ₇ S
Molecular Weight:	558.65
Target:	HIV Protease
Pathway:	Anti-infection; Metabolic Enzyme/Protease
Storage:	Please store the product under the recommended conditions in the Certificate of Analysis.



BIOLOGICAL ACTIVITY

Description	HIV-1 protease-IN-2 is a potent HIV-1 protease inhibitor with an IC ₅₀ of 2.53 nM. HIV-1 protease-IN-2 shows antiviral activity against DRV (Darunavir)-sensitive or DRV-resistant HIV-1 variants ^[1] .
IC₅₀ & Target	IC ₅₀ : 2.53 nM (HIV-1 protease) ^[1]
In Vitro	HIV-1 protease-IN-2 (compound 10e) (100 nM) shows a promising inhibition ratio of 68% at 100 nM for wild-type HIV-1 ^[1] . HIV-1 protease-IN-2 (0-1000 nM) shows antiviral activity against DRV (Darunavir)-sensitive or resistant pseudotyped HIV-1 with EC ₅₀ s of 0.27 μM and 0.59 μM for HIV-1 _{NL4-3} and HIV ^R _{DRVs} , respectively ^[1] . MCE has not independently confirmed the accuracy of these methods. They are for reference only.

REFERENCES

[1]. Zhu M, et al. Preliminary SAR and biological evaluation of potent HIV-1 protease inhibitors with pyrimidine bases as novel P2 ligands to enhance activity against DRV-resistant HIV-1 variants. *Eur J Med Chem.* 2020 Jan 1;185:111866.

Caution: Product has not been fully validated for medical applications. For research use only.

Tel: 609-228-6898

Fax: 609-228-5909

E-mail: tech@MedChemExpress.com

Address: 1 Deer Park Dr, Suite Q, Monmouth Junction, NJ 08852, USA