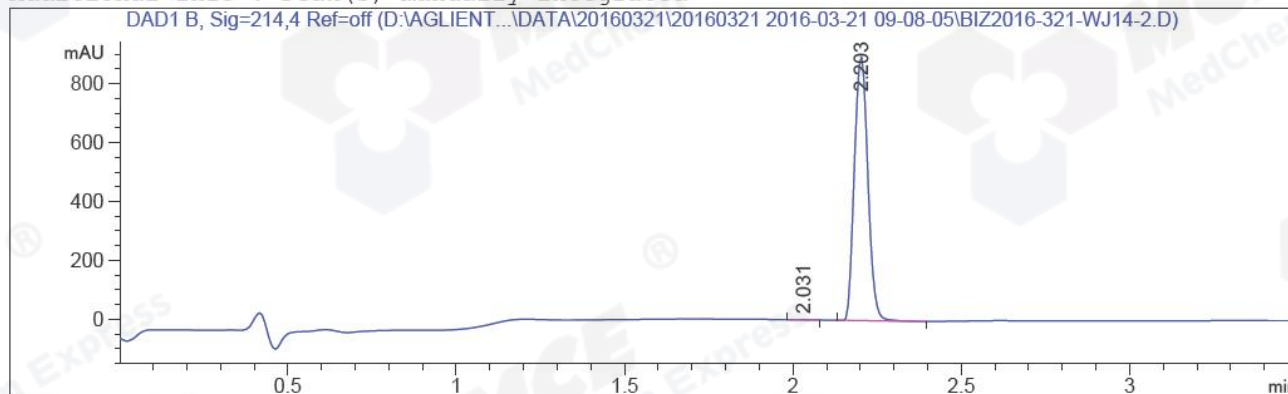


=====

Acq. Operator	: Su Xiao Ying(LCMS-02)	Seq. Line	: 99
Acq. Instrument	: HY-LCMS-02	Location	: P1-B-02
Injection Date	: 3/21/2016 5:29:07 PM	Inj	: 1
		Inj Volume	: 3.000 µl
Different Inj Volume from Sample Entry		Actual Inj Volume	: 10.000 µl
Acq. Method	: D:\AGLIENT 1260\DATA\20160321\20160321 2016-03-21 09-08-05\100-1000MS+3MIN-1.5_(0.02%FA).M		
Last changed	: 3/21/2016 9:08:05 AM by Su Xiao Ying(LCMS-02)		
Analysis Method	: D:\AGLIENT 1260\DATA\20160321\20160321 2016-03-21 09-08-05\100-1000MS+3MIN-1.5_(0.02%FA).M (Sequence Method)		
Last changed	: 3/21/2016 5:38:58 PM by Su Xiao Ying(LCMS-02) (modified after loading)		
Method Info	: HY-365_5H01RS,M,A-RP-108, 210nm,23min		
Catalog No	: HY-14691 Batch#19817 A-RP-134		

Additional Info : Peak(s) manually integrated



=====  
Area Percent Report  
=====

Sorted By : Signal  
Multiplier : 1.0000  
Dilution : 1.0000  
Do not use Multiplier & Dilution Factor with ISTDs

Signal 1: DAD1 B, Sig=214,4 Ref=off

Peak #	RetTime [min]	Type	Width [min]	Area [mAU*s]	Height [mAU]	Area %
1	2.031	MM	0.0499	4.41687	1.47627	0.1759
2	2.203	MM	0.0463	2506.14697	902.76465	99.8241

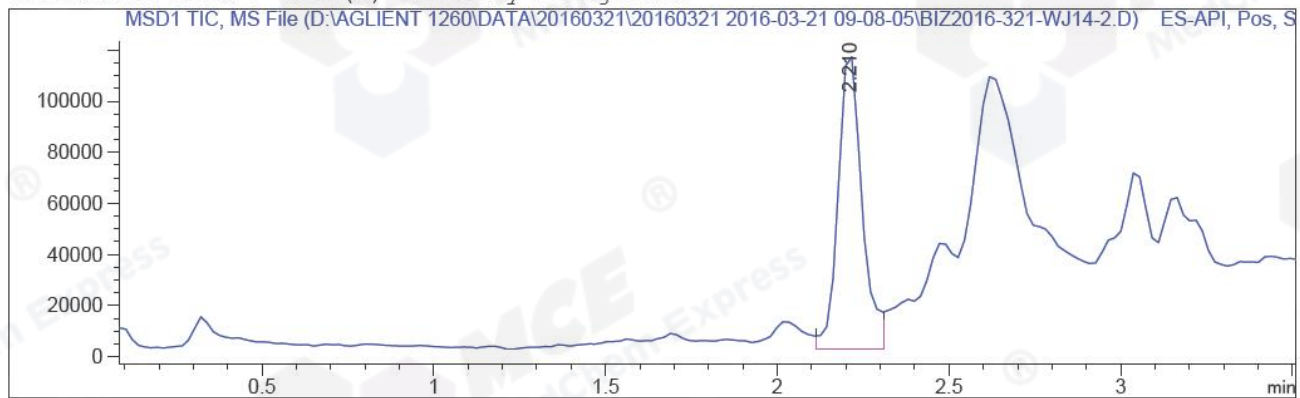
Totals : 2510.56385 904.24092

=====  
\*\*\* End of Report \*\*\*

=====

Acq. Operator	: Su Xiao Ying(LCMS-02)	Seq. Line	: 99
Acq. Instrument	: HY-LCMS-02	Location	: P1-B-02
Injection Date	: 3/21/2016 5:29:07 PM	Inj	: 1
		Inj Volume	: 3.000 µl
Different Inj Volume from Sample Entry		Actual Inj Volume	: 10.000 µl
Acq. Method	: D:\AGLIENT 1260\DATA\20160321\20160321 2016-03-21 09-08-05\100-1000MS+3MIN-1.5_(0.02%FA).M		
Last changed	: 3/21/2016 9:08:05 AM by Su Xiao Ying(LCMS-02)		
Analysis Method	: D:\AGLIENT 1260\DATA\20160321\20160321 2016-03-21 09-08-05\100-1000MS+3MIN-1.5_(0.02%FA).M (Sequence Method)		
Last changed	: 3/21/2016 5:37:25 PM by Su Xiao Ying(LCMS-02) (modified after loading)		
Method Info	: HY-365_5H01RS,M,A-RP-108, 210nm,23min		
Catalog No	: HY-14691 Batch#19817 A-RP-134		

Additional Info : Peak(s) manually integrated



MS Signal: MSD1 TIC, MS File, ES-API, Pos, Scan, Frag: 50  
Spectra averaged over upper half of peaks.  
Noise Cutoff: 1000 counts.  
Reportable Ion Abundance: > 10%.

Retention Time (MS)	MS Area	Mol. Weight or Ion
2.210	555247	595.10 I
		574.10 I
		573.10 I

