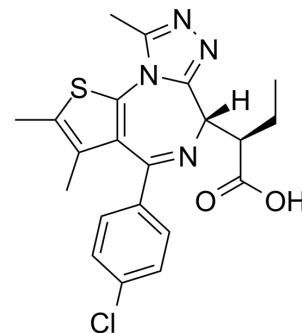


ET-JQ1-OH

Cat. No.:	HY-147046
CAS No.:	2421153-77-5
Molecular Formula:	C ₂₁ H ₂₁ ClN ₄ O ₂ S
Molecular Weight:	428.94
Target:	Epigenetic Reader Domain
Pathway:	Epigenetics
Storage:	Please store the product under the recommended conditions in the Certificate of Analysis.



BIOLOGICAL ACTIVITY

Description	ET-JQ1-OH is an allele-specific BET inhibitor ^[1] .
IC ₅₀ & Target	BET ^[1]

REFERENCES

[1]. Bond AG, et al. Stereoselective synthesis of allele-specific BET inhibitors. *Org Biomol Chem*. 2020 Oct 7;18(38):7533-7539.

Caution: Product has not been fully validated for medical applications. For research use only.

Tel: 609-228-6898

Fax: 609-228-5909

E-mail: tech@MedChemExpress.com

Address: 1 Deer Park Dr, Suite Q, Monmouth Junction, NJ 08852, USA