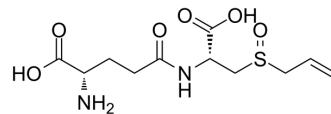


γ-L-Glutamyl-S-allyl-L-cysteine

Cat. No.:	HY-147065
CAS No.:	1299925-32-8
Molecular Formula:	C ₁₁ H ₁₈ N ₂ O ₆ S
Molecular Weight:	306.34
Target:	Others
Pathway:	Others
Storage:	Please store the product under the recommended conditions in the Certificate of Analysis.



BIOLOGICAL ACTIVITY

Description

γ-L-Glutamyl-S-allyl-L-cysteine is a naturally occurring organosulfur compound found in garlic^[1].

REFERENCES

[1]. Yi-Yu Chen, et al. Enzymatic synthesis of γ-L-glutamyl-S-allyl-L-cysteine, a naturally occurring organosulfur compound from garlic, by *Bacillus licheniformis* γ-glutamyltranspeptidase. *Enzyme Microb Technol.* Jul-Aug 2015;75-76:18-24.

Caution: Product has not been fully validated for medical applications. For research use only.

Tel: 609-228-6898

Fax: 609-228-5909

E-mail: tech@MedChemExpress.com

Address: 1 Deer Park Dr, Suite Q, Monmouth Junction, NJ 08852, USA