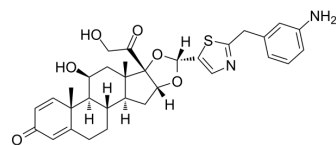


INX-SM-6

Cat. No.:	HY-147119
CAS No.:	2734878-16-9
Molecular Formula:	C ₃₂ H ₃₆ N ₂ O ₆ S
Molecular Weight:	576.7
Target:	ADC Cytotoxin
Pathway:	Antibody-drug Conjugate/ADC Related
Storage:	-20°C, sealed storage, away from moisture and light * In solvent : -80°C, 6 months; -20°C, 1 month (sealed storage, away from moisture and light)



SOLVENT & SOLUBILITY

In Vitro

DMSO : ≥ 50 mg/mL (86.70 mM)
* "≥" means soluble, but saturation unknown.

Concentration	Mass		
	1 mg	5 mg	10 mg
1 mM	1.7340 mL	8.6700 mL	17.3400 mL
5 mM	0.3468 mL	1.7340 mL	3.4680 mL
10 mM	0.1734 mL	0.8670 mL	1.7340 mL

Please refer to the solubility information to select the appropriate solvent.

BIOLOGICAL ACTIVITY

Description

INX-SM-6 can be used for targeted delivery of anti-inflammatory agent. INX-SM-6 inhibits LPS-induced IL-1β production in human PBMCS^[1].

REFERENCES

[1]. Jay ROTHSTEIN, et al. Anti-human vista antibodies and use thereof. WO2021216913A1

Caution: Product has not been fully validated for medical applications. For research use only.

Tel: 609-228-6898

Fax: 609-228-5909

E-mail: tech@MedChemExpress.com

Address: 1 Deer Park Dr, Suite Q, Monmouth Junction, NJ 08852, USA