

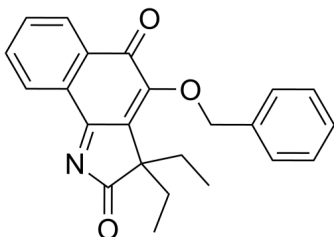
RIG012

Cat. No.: HY-147124
Batch No.: 261652
CAS No.: 2642218-43-5
Molecular Formula: C₂₃H₂₁NO₃

ANALYTICAL DATA

Theoretical: C(76.86%), H(5.89%), N(3.90%)
Result: C(76.73%), H(5.55%), N(3.90%)

Chemical Structure:



Caution: Product has not been fully validated for medical applications. For research use only.

Tel: 609-228-6898

Fax: 609-228-5909

E-mail: tech@MedChemExpress.com

Address: 1 Deer Park Dr, Suite Q, Monmouth Junction, NJ 08852, USA