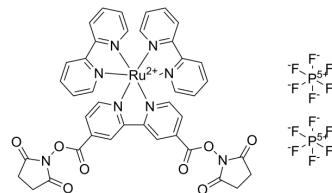


Ru(bpy)2(dcbpy)NHS dihexafluorophosphate

Cat. No.:	HY-147172
CAS No.:	160525-49-5
Molecular Formula:	$C_{40}H_{30}F_{12}N_8O_8P_2Ru$
Molecular Weight:	1141.71
Target:	Fluorescent Dye
Pathway:	Others
Storage:	Please store the product under the recommended conditions in the Certificate of Analysis.



BIOLOGICAL ACTIVITY

Description	Ru(bpy)2(dcbpy)NHS (dihexafluorophosphate) combines with gold nanoparticle amplification can be used for the determination of lysozyme with electrochemiluminescence ^[1] .
-------------	---

REFERENCES

[1]. Bai J, et al. [Ru(bpy)2(dcbpy)NHS] labeling/apptamer-based biosensor for the detection of lysozyme by increasing sensitivity with gold nanoparticle amplification. Chem Asian J. 2008 Nov 13;3(11):1935-41.

Caution: Product has not been fully validated for medical applications. For research use only.

Tel: 609-228-6898

Fax: 609-228-5909

E-mail: tech@MedChemExpress.com

Address: 1 Deer Park Dr, Suite Q, Monmouth Junction, NJ 08852, USA