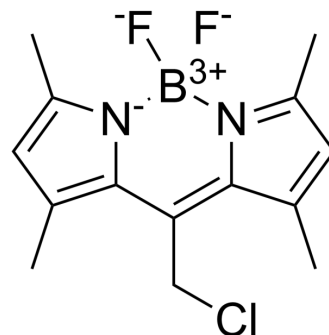


Bodipy 8-chloromethane

Cat. No.:	HY-147177
CAS No.:	208462-25-3
Molecular Formula:	C ₁₄ H ₁₆ BClF ₂ N ₂
Molecular Weight:	296.55
Target:	Fluorescent Dye
Pathway:	Others
Storage:	Please store the product under the recommended conditions in the Certificate of Analysis.



BIOLOGICAL ACTIVITY

Description

BODIPY-8-chloromethane is a fluorophore. BODIPY-8-chloromethane can be used as a fluorescent probe^[1].

REFERENCES

[1]. Castillo JP, et al. β 1-subunit-induced structural rearrangements of the Ca²⁺- and voltage-activated K⁺ (BK) channel. Proc Natl Acad Sci U S A. 2016 Jun 7;113(23):E3231-9.

Caution: Product has not been fully validated for medical applications. For research use only.

Tel: 609-228-6898

Fax: 609-228-5909

E-mail: tech@MedChemExpress.com

Address: 1 Deer Park Dr, Suite Q, Monmouth Junction, NJ 08852, USA