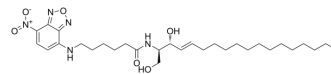


C-6 NBD-dihydro-Ceramide

Cat. No.:	HY-147178
CAS No.:	114301-95-0
Molecular Formula:	C ₃₀ H ₄₉ N ₅ O ₆
Molecular Weight:	575.74
Target:	Others
Pathway:	Others
Storage:	Please store the product under the recommended conditions in the Certificate of Analysis.



BIOLOGICAL ACTIVITY

Description	C-6 NBD-dihydro-Ceramide is a membrane-permeable ceramides. C-6 NBD-dihydro-Ceramide is a biologically active fluorescent analog of short chain ^{[1][2]} .
-------------	---

REFERENCES

- [1]. Paul P, et al. Purification and characterization of UDP-glucose:ceramide glucosyltransferase from rat liver Golgi membranes. J Biol Chem. 1996 Jan 26;271(4):2287-93.
- [2]. van't Hof W, et al. Epithelial sphingolipid sorting allows for extensive variation of the fatty acyl chain and the sphingosine backbone. Biochem J. 1992 May 1;283 (Pt 3)(Pt 3):913-7.

Caution: Product has not been fully validated for medical applications. For research use only.

Tel: 609-228-6898

Fax: 609-228-5909

E-mail: tech@MedChemExpress.com

Address: 1 Deer Park Dr, Suite Q, Monmouth Junction, NJ 08852, USA