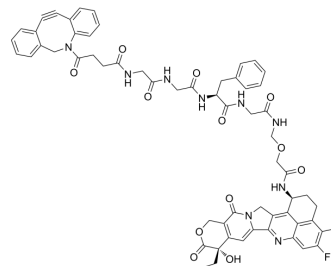


DIBAC-GGFG-NH₂CH₂-Dxd

Cat. No.:	HY-147363		
CAS No.:	2758875-01-1		
Molecular Formula:	C ₆₁ H ₅₈ FN ₉ O ₁₂		
Molecular Weight:	1128.16		
Target:	Drug-Linker Conjugates for ADC		
Pathway:	Antibody-drug Conjugate/ADC Related		
Storage:	Powder	-20°C	3 years
		4°C	2 years
	In solvent	-80°C	6 months
		-20°C	1 month



SOLVENT & SOLUBILITY

In Vitro

DMSO : 100 mg/mL (88.64 mM; Need ultrasonic)

Concentration	Mass			
	1 mg	5 mg	10 mg	
1 mM	0.8864 mL	4.4320 mL	8.8640 mL	
5 mM	0.1773 mL	0.8864 mL	1.7728 mL	
10 mM	0.0886 mL	0.4432 mL	0.8864 mL	

Please refer to the solubility information to select the appropriate solvent.

BIOLOGICAL ACTIVITY

Description

DIBAC-GGFG-NH₂CH₂-Dxd (compound LP4), a Camptothecin (HY-16560) derivative, is a linker-payload of protein-agent conjugates^[1]. Dxd (HY-13631D) can be used as a payload for the antibody-coupling drug ADC (DS-8201a). DIBAC-GGFG-NH₂CH₂-Dxd is a click chemistry reagent, it contains a DBCO group that can undergo strain-promoted alkyne-azide cycloaddition (SPAAC) with molecules containing Azide groups.

REFERENCES

[1]. Amy Han, et al. Camptothecin analogs conjugated to a glutamine residue in a protein, and their use. WO2022015656A1

Caution: Product has not been fully validated for medical applications. For research use only.

Tel: 609-228-6898

Fax: 609-228-5909

E-mail: tech@MedChemExpress.com

Address: 1 Deer Park Dr, Suite Q, Monmouth Junction, NJ 08852, USA