

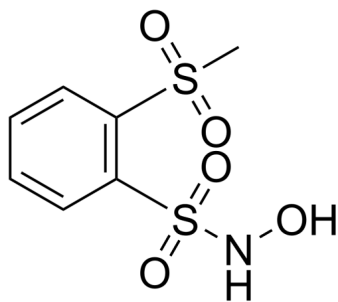
CXL-1020

Cat. No.: HY-147384
Batch No.: 271478
CAS No.: 950834-06-7
Molecular Formula: C₇H₉NO₅S₂

ANALYTICAL DATA

Theoretical: C(33.46%), H(3.61%), N(5.57%)
Result: C(33.38%), H(3.65%), N(5.51%)

Chemical Structure:



Caution: Product has not been fully validated for medical applications. For research use only.

Tel: 609-228-6898

Fax: 609-228-5909

E-mail: tech@MedChemExpress.com

Address: 1 Deer Park Dr, Suite Q, Monmouth Junction, NJ 08852, USA