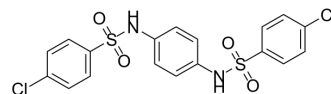


## hiCE inhibitor-1

Cat. No.:	HY-147388
CAS No.:	2654-68-4
Molecular Formula:	C <sub>18</sub> H <sub>14</sub> Cl <sub>2</sub> N <sub>2</sub> O <sub>4</sub> S <sub>2</sub>
Molecular Weight:	457.35
Target:	Others
Pathway:	Others
Storage:	Please store the product under the recommended conditions in the Certificate of Analysis.



### BIOLOGICAL ACTIVITY

<b>Description</b>	hiCE inhibitor-1, a sulfonamide derivative, is a selective human intestinal enzyme (hiCE) inhibitor with a K <sub>i</sub> value of 53.3 nM. hiCE inhibitor-1 can be used to improve <a href="#">Irinotecan</a> (HY-16562)-induced diarrhoea <sup>[1]</sup> .
--------------------	--

### REFERENCES

[1]. Randy M Wadkins, et al. Discovery of novel selective inhibitors of human intestinal carboxylesterase for the amelioration of irinotecan-induced diarrhea: synthesis, quantitative structure-activity relationship analysis, and biological activity. Mol Pharmacol. 2004 Jun;65(6):1336-43.

**Caution: Product has not been fully validated for medical applications. For research use only.**

Tel: 609-228-6898

Fax: 609-228-5909

E-mail: [tech@MedChemExpress.com](mailto:tech@MedChemExpress.com)

Address: 1 Deer Park Dr, Suite Q, Monmouth Junction, NJ 08852, USA