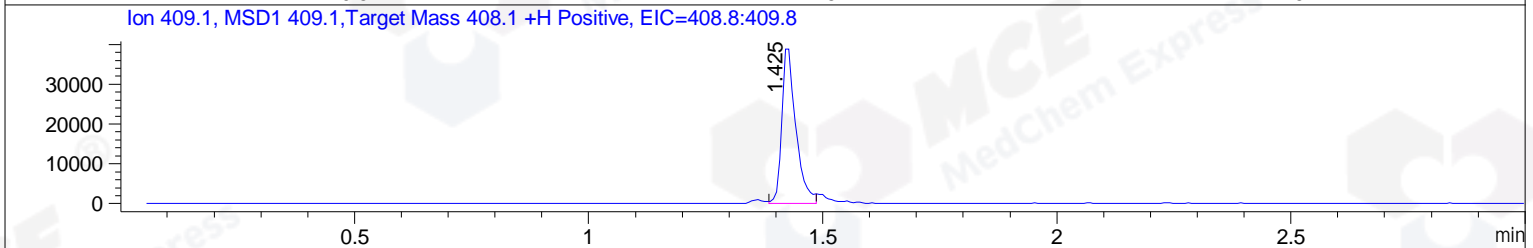
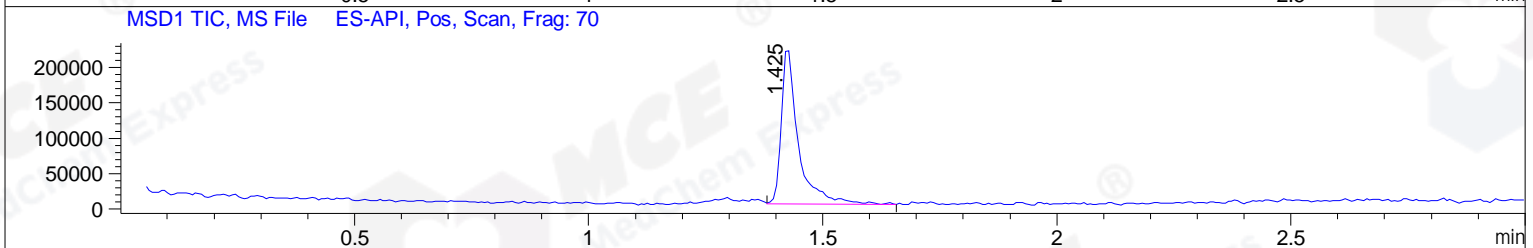
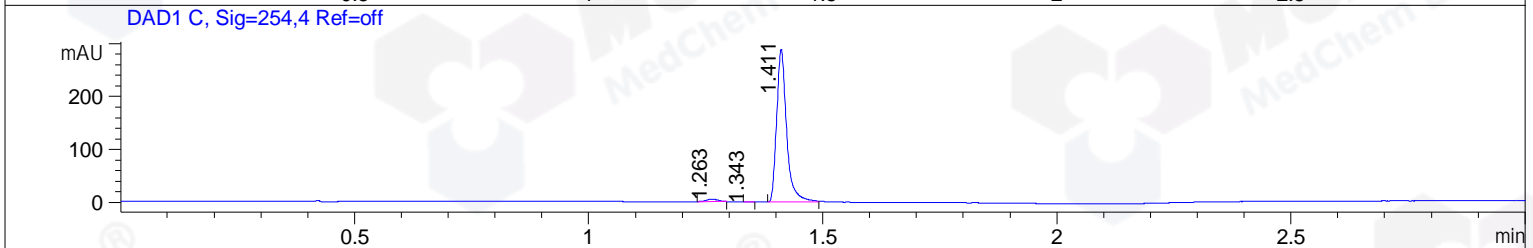
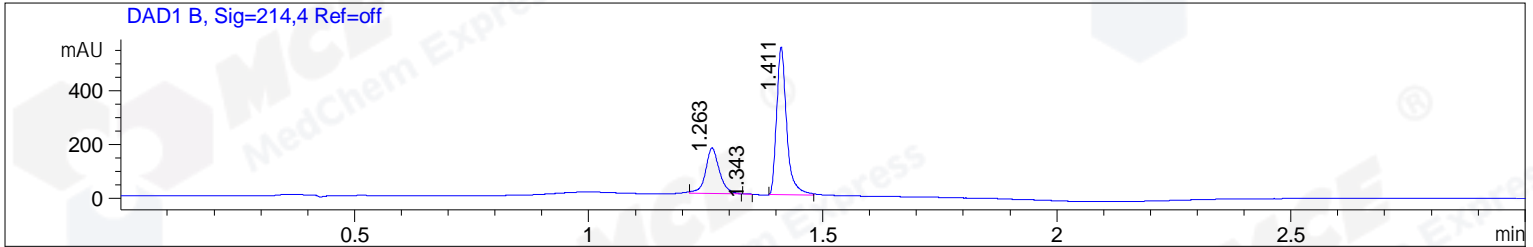


File ..\DATA\2019\20190327\567\BIZ2019-326-WYQ24.D Tgt Mass (CHM):  
 Injection Date : 27 Mar 19 12:33 pm +0800 Seq. Line : 38  
 Sample Name : BIZ2019-326-WYQ24 Location : PL-E-05  
 Acq. Operator : LQ\_1052 Inj : 1  
 Spec. Reported : MS Integration Inj Volume : 1 ul  
 Acq. Method : D:\Chem32\1\data\2019\20190327\567\1-POS-3MIN-1.M  
 Analysis Method : D:\CHEM32\1\DATA\2019\20190327\567\1-POS-3MIN-1.M  
 Catalog No : HY-14744A Batch# 39500-20190326  
 Method Info : Mobile Phase: A: water(0.01%TFA) B:ACN(0.01%TFA)  
 Gradient: 5% to 95%B within 1.3 min  
 Flow Rate :1.8ml/min  
 Column :SunFire C18, 4.6\*50mm,3.5um A-RP-314  
 Oven Temperature : 45



Integration Results for DAD1 B, Sig=214,4 Ref=off

RetTim	Width	Area	Height	Area%	MS (+)
1.26	0.03	351.34	170.64	29.96	157
1.34	0.01	0.95	1.25	0.08	157
1.41	0.02	820.26	550.11	69.95	238

Integration Results for DAD1 C, Sig=254,4 Ref=off

RetTim	Width	Area	Height	Area%	MS (+)
1.26	0.03	8.14	4.90	1.87	157
1.34	0.02	0.25	0.25	0.06	157
1.41	0.02	427.60	288.86	98.08	238

Integration Results for MSD1 TIC, MS File

RetTim	Width	Area	Height	Area%	MS (+)
1.42	0.04	561218.00	220557.23	100.00	238

Ret. Time: 1.42

<<<< POSITIVE SPECTRA >>>>

ES-API Positive

