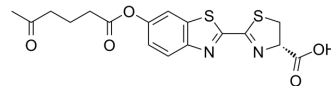


## SBP-2

Cat. No.:	HY-147508
CAS No.:	2494035-92-4
Molecular Formula:	C <sub>17</sub> H <sub>16</sub> N <sub>2</sub> O <sub>5</sub> S <sub>2</sub>
Molecular Weight:	392.45
Target:	Others
Pathway:	Others
Storage:	Please store the product under the recommended conditions in the Certificate of Analysis.



## BIOLOGICAL ACTIVITY

### Description

SBP-2 is a sulfite bioluminescent probe (SBP). The recognition of SBP-2 towards sulfite is based on the mechanism of a sulfite-mediated intramolecular cleavage reaction<sup>[1]</sup>.

## REFERENCES

[1]. Yang X, Feng P, Ma L, Kang T, Hu S, Hai A, Ke B, Liu J, Li M. Biological applications of a turn-on bioluminescent probe for monitoring sulfite oxidase deficiency in vivo. *Eur J Med Chem.* 2020 Aug 15;200:112476.

**Caution: Product has not been fully validated for medical applications. For research use only.**

Tel: 609-228-6898

Fax: 609-228-5909

E-mail: tech@MedChemExpress.com

Address: 1 Deer Park Dr, Suite Q, Monmouth Junction, NJ 08852, USA