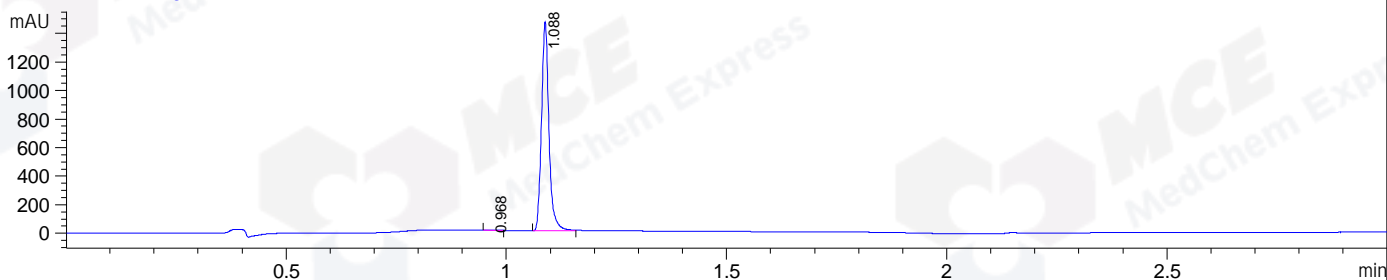


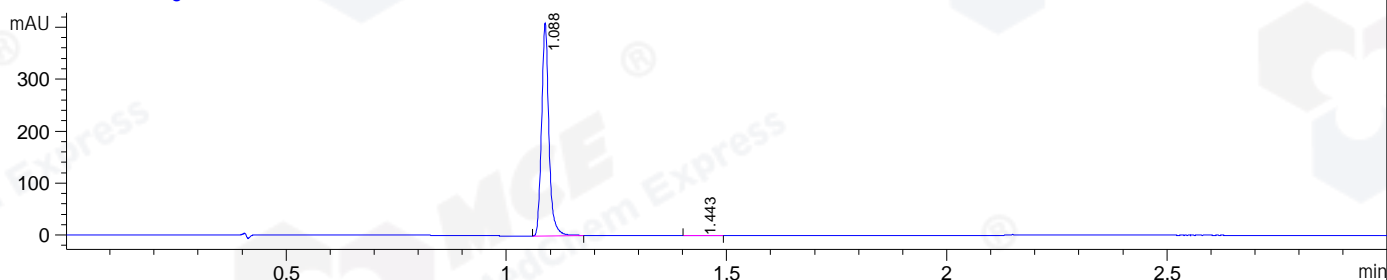
File E:\ChemStation\1\DATA\2023\2023-04\2023-04-28\BIZ2023-427-WLQ31-LCMS-20-003260.D

Injection Date : 28-Apr-23, 10:40:00 Tgt Mass(EZX) :
 Sample Name : BIZ2023-427-WLQ31 Location : P1-B-11
 Acq. Operator : LY_2278 Inj : 1
 Spec. Reported : MS Integration Inj Volume : 3 ul
 Acq. Method : E:\ChemStation\1\Methods\1-POS-3MIN(1.8ML)-(150-1000).M
 Analysis Method : E:\CHEMSTATION\1\METHODS\1-POS-3MIN(1.8ML)-(150-1000).M
 CAS NO. : 839712-12-8 WalkUp method: '1-POS-3MIN' Project: BIZ2023
 Method Info : Mobile Phase: A: water(0.01%FA) B:ACN(0.01%FA)
 Flow Rate : 1.8ml/min
 Column : SunFire C18, 4.6*50mm, 3.5um
 Oven Temperature : 45C

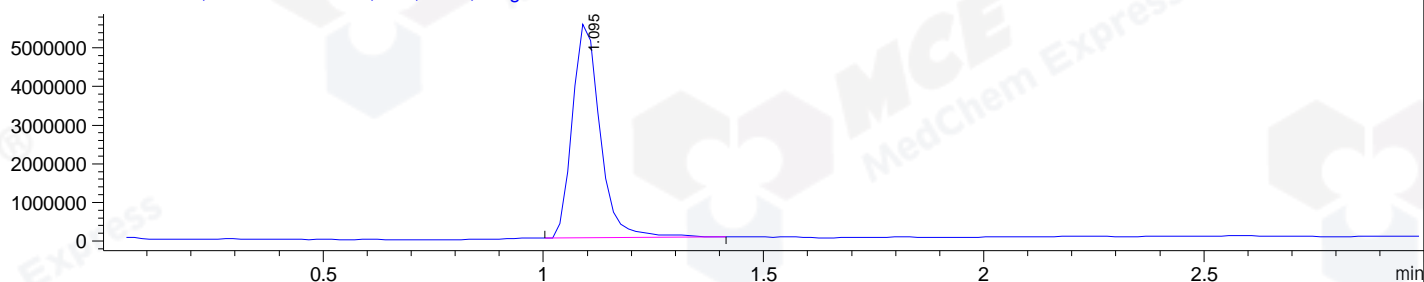
DAD1 A, Sig=214,4 Ref=off



DAD1 B, Sig=254,4 Ref=off



MSD1 TIC, MS File ES-API, Pos, Scan, Frag: 70



Integration Results for DAD1 A, Sig=214,4 Ref=off

RetTim	Width	Area	Height	Area%
0.97	0.03	2.99	1.75	0.17
1.09	0.02	1712.88	1461.67	99.83

Integration Results for DAD1 B, Sig=254,4 Ref=off

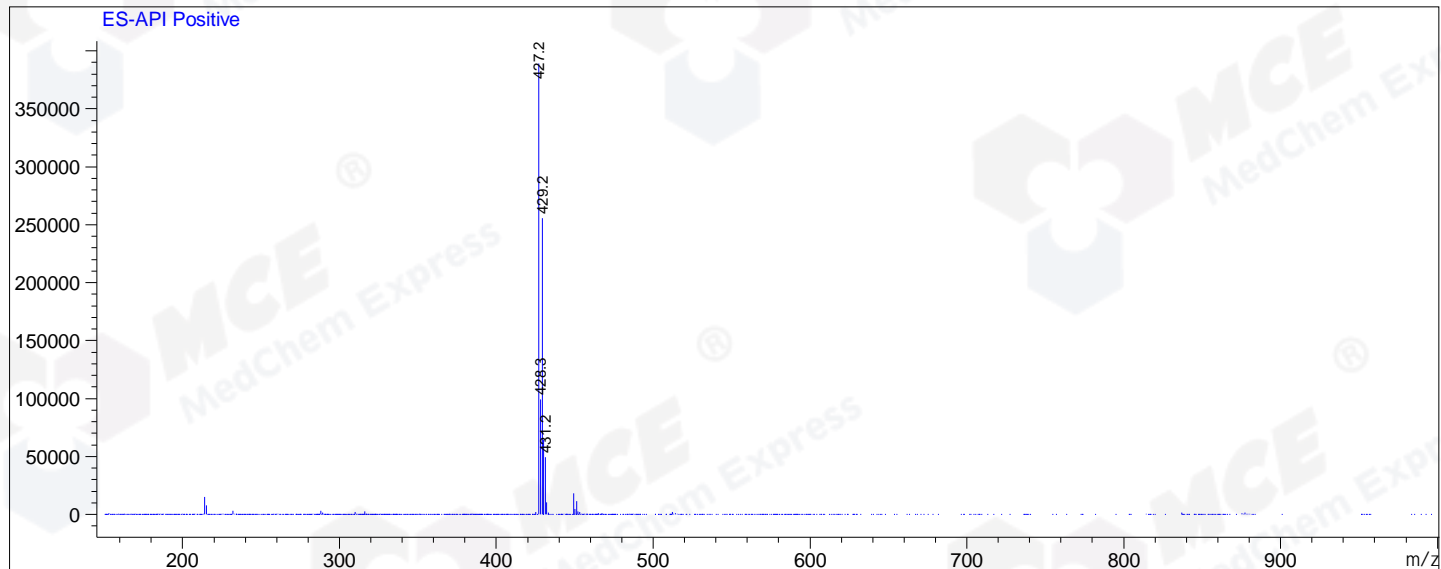
RetTim	Width	Area	Height	Area%
1.09	0.02	473.11	409.32	99.87
1.44	0.02	0.61	0.35	0.13

Integration Results for MSD1 TIC, MS File

RetTim	Width	Area	Height	Area%
1.09	0.07	24246562.00	5609944.00	100.00

Ret. Time: 1.09

<<<< POSITIVE SPECTRA >>>>



*** End of Report ***