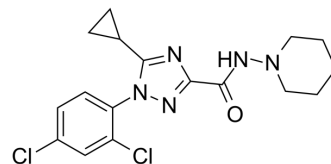


CB1-IN-2

| | |
|--------------------|---|
| Cat. No.: | HY-147821 |
| CAS No.: | 2527805-39-4 |
| Molecular Formula: | C ₁₇ H ₁₉ Cl ₂ N ₃ O |
| Molecular Weight: | 380.27 |
| Target: | Cannabinoid Receptor |
| Pathway: | GPCR/G Protein; Neuronal Signaling |
| Storage: | Please store the product under the recommended conditions in the Certificate of Analysis. |



BIOLOGICAL ACTIVITY

| | |
|---------------------------|---|
| Description | CB1-IN-2 (Compound 4g) is a selective CB ₁ inhibitor with an IC ₅₀ of 0.644 μM. CB1-IN-2 can penetrate BBB and might cause CNS side effect similar with Rimonabant ^[1] . |
| IC ₅₀ & Target | CB1 0.644 μM (IC ₅₀) |

REFERENCES

[1]. Tsai SE, et al. Chlorotrimethylsilane promoted one-flask heterocyclic synthesis of 1,2,4-triazoles from nitrilimines: Modeling studies and bioactivity evaluation of LH-21 and Rimonabant analogues. *Bioorg Chem.* 2020 Nov;104:104299.

Caution: Product has not been fully validated for medical applications. For research use only.

Tel: 609-228-6898

Fax: 609-228-5909

E-mail: tech@MedChemExpress.com

Address: 1 Deer Park Dr, Suite Q, Monmouth Junction, NJ 08852, USA