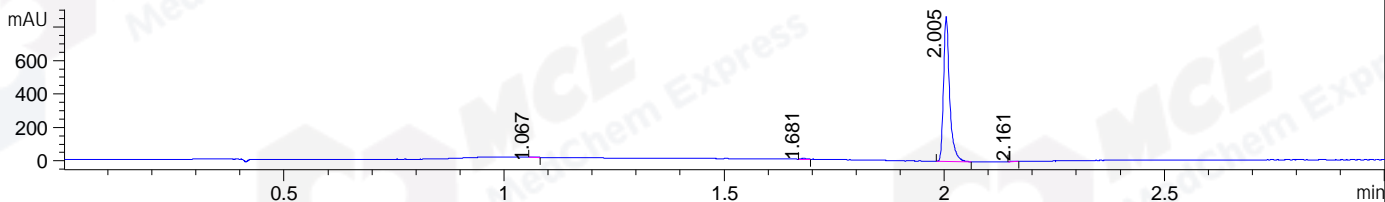
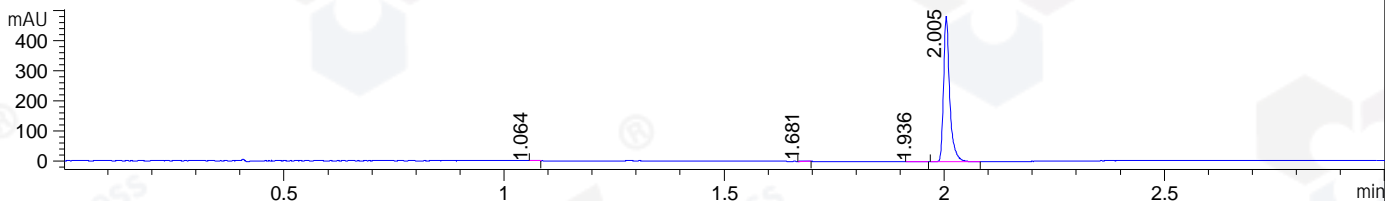


File ..\DATA\2020\20200704\1026\BIZ2020-703-WMX5.D Tgt Mass (CHM):
 Injection Date : 4 Jul 20 10:32 am +0800 Seq. Line : 20
 Sample Name : BIZ2020-703-WMX5 Location : P1-B-02
 Acq. Operator : ZJ_1432 Inj : 1
 Spec. Reported : MS Integration Inj Volume : 1 ul
 Acq. Method : D:\Chem32\1\data\2020\20200704\1026\1-POS-3MIN.M
 Analysis Method : D:\CHEM32\1\DATA\2020\20200704\1026\1-POS-3MIN.M
 Catalog No : HY-14804
 Method Info : Mobile Phase: A: water(0.01%TFA) B:ACN(0.01%TFA)
 Gradient: 5% to 95%B within 1.3 min
 Flow Rate :1.8ml/min
 Column :SunFire C18, 4.6*50mm,3.5um A-RP-607
 Oven Temperature : 45

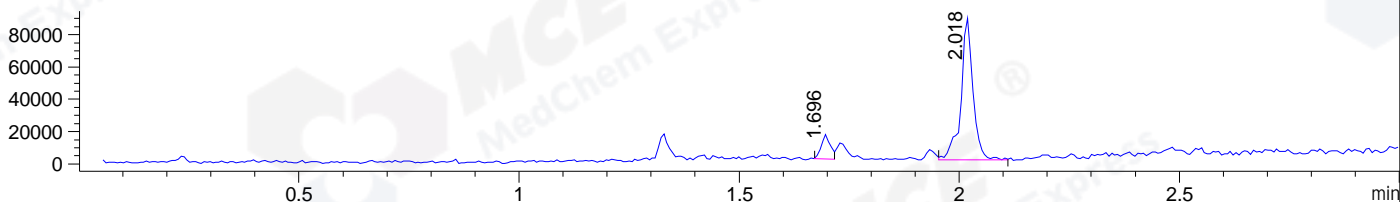
DAD1 B, Sig=214,4 Ref=off



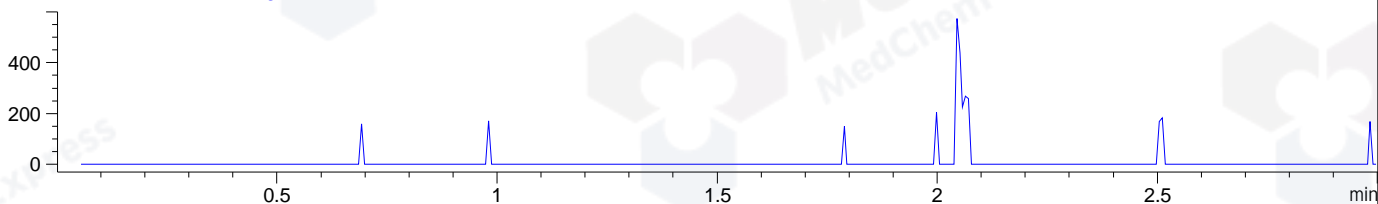
DAD1 C, Sig=254,4 Ref=off



MSD1 TIC, MS File ES-API, Pos, Scan, Frag: 70



Ion 413, MSD1 413, Target Mass 412 +H Positive, EIC=412.7:413.7



Integration Results for DAD1 B, Sig=214,4 Ref=off

RetTim	Width	Area	Height	Area%	MS (+)
1.07	0.01	1.93	2.48	0.23	ND
1.68	0.01	3.97	5.14	0.47	630
2.00	0.02	834.11	867.92	99.13	416
2.16	0.02	1.38	1.27	0.16	ND

Integration Results for DAD1 C, Sig=254,4 Ref=off

RetTim	Width	Area	Height	Area%	MS (+)
1.06	0.01	0.65	1.07	0.14	ND
1.68	0.01	1.61	2.05	0.34	630
1.94	0.02	1.24	0.90	0.26	ND
2.00	0.02	468.64	484.20	99.26	416

Integration Results for MSD1 TIC, MS File

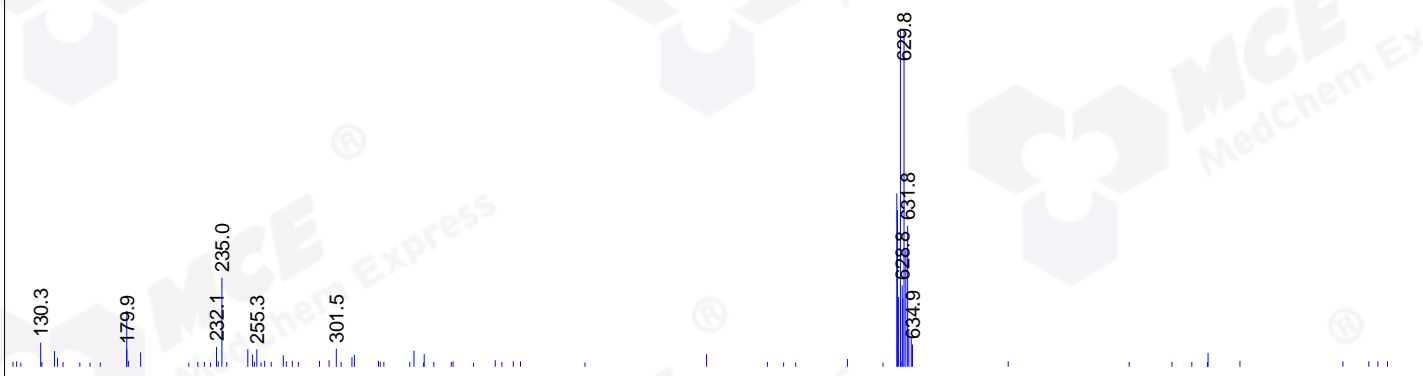
RetTim	Width	Area	Height	Area%	MS (+)
1.70	0.02	21473.97	15137.60	11.30	628

2.02 0.03 168637.33 87925.93 88.70 416

Ret. Time: 1.70

<<<< POSITIVE SPECTRA >>>>

ES-API Positive



Ret. Time: 2.02

ES-API Positive

