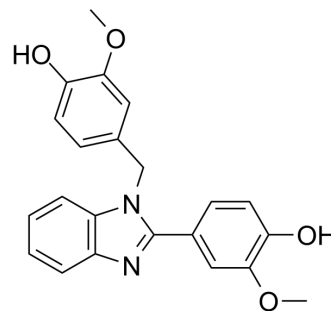


ATPase-IN-2

Cat. No.:	HY-148041
CAS No.:	85573-18-8
Molecular Formula:	C ₂₂ H ₂₀ N ₂ O ₄
Molecular Weight:	376.41
Target:	Others
Pathway:	Others
Storage:	4°C, protect from light * In solvent : -80°C, 6 months; -20°C, 1 month (protect from light)



BIOLOGICAL ACTIVITY

Description	ATPase-IN-2 is an ATPase inhibitor with an IC ₅₀ value of 0.9 μM. ATPase-IN-2 inhibits C. difficile toxin B (TcdB) glycohydrolase activity with an AC ₅₀ value of 30.91 μM. ATPase-IN-2 can be used for the research of ATP-related ^[1] .
IC ₅₀ & Target	IC50: 0.9 μM (ATPase) ^[1]

REFERENCES

[1]. Jeffery Brodsky, et al. Identification of SV40 T antigen inhibitors: A route to novel anti-viral reagents. 2010.

Caution: Product has not been fully validated for medical applications. For research use only.

Tel: 609-228-6898

Fax: 609-228-5909

E-mail: tech@MedChemExpress.com

Address: 1 Deer Park Dr, Suite Q, Monmouth Junction, NJ 08852, USA