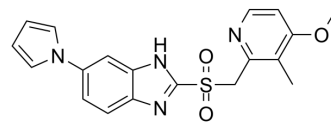


## Ilaprazole sulfone

Cat. No.:	HY-148051
CAS No.:	172152-37-3
Molecular Formula:	C <sub>19</sub> H <sub>18</sub> N <sub>4</sub> O <sub>3</sub> S
Molecular Weight:	382.44
Target:	Drug Metabolite
Pathway:	Metabolic Enzyme/Protease
Storage:	Please store the product under the recommended conditions in the Certificate of Analysis.



### BIOLOGICAL ACTIVITY

#### Description

Ilaprazole sulfone is the major metabolite of [ilaprazole](#) (HY-101664), is predominantly catalysed by CYP3A4/5. Ilaprazole (IY-81149) is an orally active proton pump inhibitor<sup>[1]</sup>.

### REFERENCES

[1]. Seo KA, et al. Ilaprazole, a new proton pump inhibitor, is primarily metabolized to ilaprazole sulfone by CYP3A4 and 3A5. *Xenobiotica*. 2012 Mar;42(3):278-84.

**Caution: Product has not been fully validated for medical applications. For research use only.**

Tel: 609-228-6898

Fax: 609-228-5909

E-mail: [tech@MedChemExpress.com](mailto:tech@MedChemExpress.com)

Address: 1 Deer Park Dr, Suite Q, Monmouth Junction, NJ 08852, USA