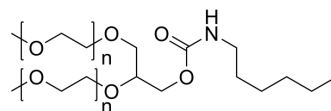


## Poly(oxy-1,2-ethanediyl)-propoxy-amide-C6

Cat. No.:	HY-148154
Molecular Formula:	$C_{12}H_{25}NO_4(C_2H_4O)_n$
Target:	Others
Pathway:	Others
Storage:	Please store the product under the recommended conditions in the Certificate of Analysis.



### BIOLOGICAL ACTIVITY

#### Description

Poly(oxy-1,2-ethanediyl)-propoxy-amide-C6 (n=450) is an active compound. Poly(oxy-1,2-ethanediyl)-propoxy-amide-C6 is a small molecule moiety for pegylation modification in [Avacincaptad pegol](#) (HY-147080)<sup>[1]</sup>.

### REFERENCES

[1]. Statement on a nonproprietary name adopted by the usan council, December 30, 2014.

**Caution: Product has not been fully validated for medical applications. For research use only.**

Tel: 609-228-6898

Fax: 609-228-5909

E-mail: [tech@MedChemExpress.com](mailto:tech@MedChemExpress.com)

Address: 1 Deer Park Dr, Suite Q, Monmouth Junction, NJ 08852, USA