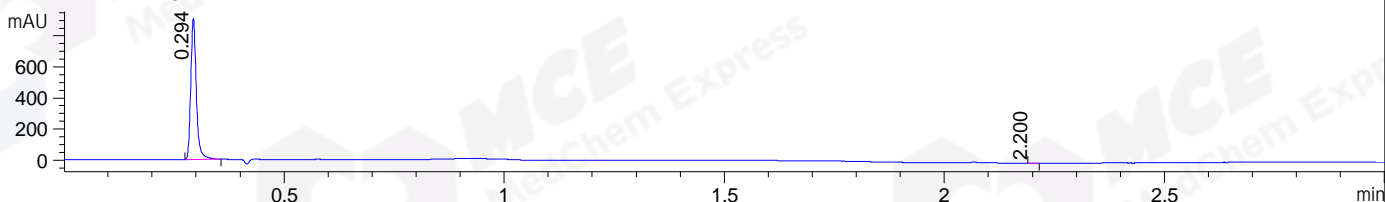
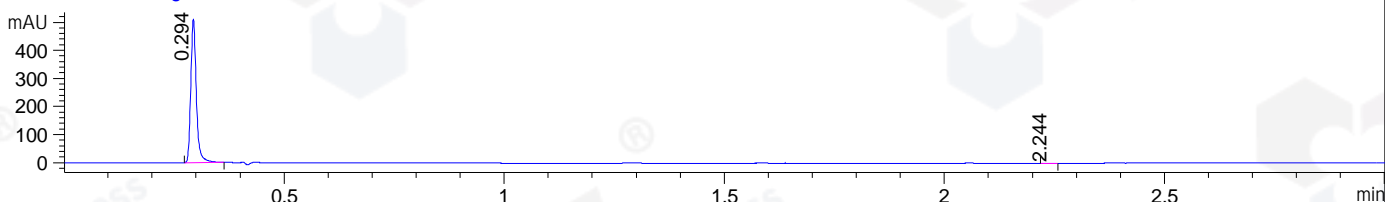


File ..\DATA\2020\20201216\1202\BIZ2020-D14-WLQ3.D Tgt Mass (CHM):
 Injection Date : 16 Dec 20 9:35 am +0800 Seq. Line : 8
 Sample Name : BIZ2020-D14-WLQ3 Location : P1-A-09
 Acq. Operator : zyj_1547 Inj : 1
 Spec. Reported : MS Integration Inj Volume : 2 ul
 Acq. Method : D:\Chem32\1\data\2020\20201216\1202\1-POS-3MIN.M
 Analysis Method : D:\CHEM32\1\DATA\2020\20201216\1202\1-POS-3MIN.M
 CAS NO. : 203120-17-6
 Method Info : Mobile Phase: A: water(0.01%TFA) B:ACN(0.01%TFA)
 Gradient: 5% to 95%B within 1.3 min
 Flow Rate :1.8ml/min
 Column :SunFire C18, 4.6*50mm,3.5um A-RP-698

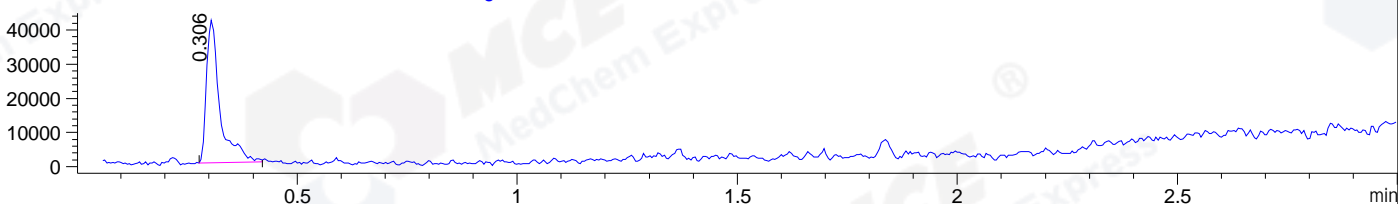
DAD1 B, Sig=214,4 Ref=off



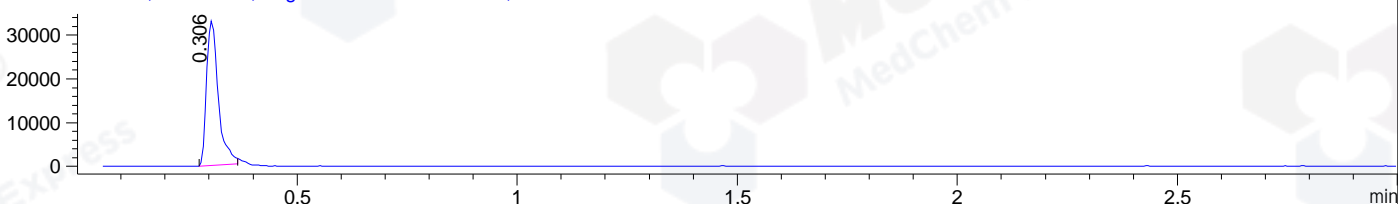
DAD1 C, Sig=254,4 Ref=off



MSD1 TIC, MS File ES-API, Pos, Scan, Frag: 70



Ion 347, MSD1 347, Target Mass 346 +H Positive, EIC=346.7:347.7



Integration Results for DAD1 B, Sig=214,4 Ref=off

RetTim	Width	Area	Height	Area%	MS(+)
0.29	0.01	802.72	909.75	99.91	347
2.20	0.01	0.69	0.80	0.09	ND

Integration Results for DAD1 C, Sig=254,4 Ref=off

RetTim	Width	Area	Height	Area%	MS(+)
0.29	0.01	447.43	510.81	99.83	347
2.24	0.02	0.75	0.64	0.17	ND

Integration Results for MSD1 TIC, MS File

RetTim	Width	Area	Height	Area%	MS(+)
0.31	0.03	90067.70	41857.02	100.00	347

Ret. Time: 0.31

<<<< POSITIVE SPECTRA >>>>

ES-API Positive

