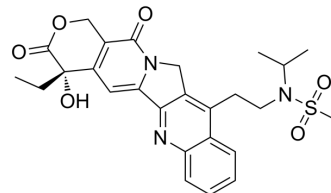


T01-1

Cat. No.:	HY-148185
CAS No.:	2356229-14-4
Molecular Formula:	C ₂₆ H ₂₉ N ₃ O ₆ S
Molecular Weight:	511.59
Target:	ADC Cytotoxin
Pathway:	Antibody-drug Conjugate/ADC Related
Storage:	-20°C, protect from light * In solvent : -80°C, 6 months; -20°C, 1 month (protect from light)



BIOLOGICAL ACTIVITY

Description	T01-1 is an anticancer agent (camptothecin derivative) with good anti-proliferative activity ^[1] .									
In Vitro	T01-1 (0-50 nM; 3 days) anti-proliferative activity in HCC1806 cells ^[1] . MCE has not independently confirmed the accuracy of these methods. They are for reference only. Cell Proliferation Assay ^[1]									
	Cell Line: HCC1806 cells									
	Concentration: 0-50 nM									
	Incubation Time: 3 days									
	Result: Inhibited cell proliferation with an EC ₅₀ value of 6.7 nM.									
In Vivo	T01-1 (1 mg/kg; i.v.; single) shows T _{1/2} values of 2.78 and 1.97 h in female and male rats, respectively ^[1] . MCE has not independently confirmed the accuracy of these methods. They are for reference only.									
	Animal Model: Sprague Dawley rat (half male and half female) ^[1] .									
	Dosage: 1 mg/kg									
	Administration: Intravenous injection; single									
	Result: Pharmacokinetic Parameters of T01-1 in Sprague Dawley rat ^[1] .									
	<table border="1"> <thead> <tr> <th></th> <th colspan="2">IV (1 mg/kg)</th> </tr> <tr> <th></th> <th>Female</th> <th>Male</th> </tr> </thead> <tbody> <tr> <td>AUC_{Last} (ng/mL•h)</td> <td>437</td> <td>214</td> </tr> </tbody> </table>		IV (1 mg/kg)			Female	Male	AUC _{Last} (ng/mL•h)	437	214
	IV (1 mg/kg)									
	Female	Male								
AUC _{Last} (ng/mL•h)	437	214								

C_{\max} (ng/mL)	838	625
MRT_{INF} (h)	2.81	0.44
$T_{1/2}$ (h)	2.78	1.97
T_{\max} (h)	0.08	0.08

REFERENCES

[1]. Li Deliang, et al. Camptothecin derivative and water-soluble prodrug, pharmaceutical composition preparation method, and application. Patent WO2020156189A1.

Caution: Product has not been fully validated for medical applications. For research use only.

Tel: 609-228-6898

Fax: 609-228-5909

E-mail: tech@MedChemExpress.com

Address: 1 Deer Park Dr, Suite Q, Monmouth Junction, NJ 08852, USA