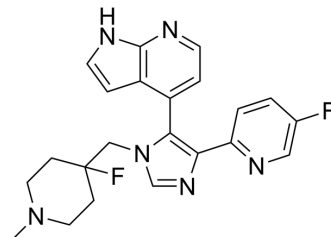


MU1742

Cat. No.:	HY-148251		
Molecular Formula:	C ₂₂ H ₂₂ F ₂ N ₆		
Molecular Weight:	408.45		
Target:	Casein Kinase		
Pathway:	Cell Cycle/DNA Damage; Stem Cell/Wnt		
Storage:	Powder	-20°C	3 years
		4°C	2 years
	In solvent	-80°C	6 months
		-20°C	1 month



SOLVENT & SOLUBILITY

In Vitro	DMSO : 100 mg/mL (244.83 mM; Need ultrasonic)					
	Preparing Stock Solutions	Solvent	Mass	1 mg	5 mg	10 mg
		Concentration				
		1 mM		2.4483 mL	12.2414 mL	24.4828 mL
		5 mM		0.4897 mL	2.4483 mL	4.8966 mL
10 mM		0.2448 mL	1.2241 mL	2.4483 mL		
Please refer to the solubility information to select the appropriate solvent.						
In Vivo	<ol style="list-style-type: none"> Add each solvent one by one: 10% DMSO >> 40% PEG300 >> 5% Tween-80 >> 45% saline Solubility: 2.5 mg/mL (6.12 mM); Clear solution; Need ultrasonic Add each solvent one by one: 10% DMSO >> 90% (20% SBE-β-CD in saline) Solubility: 2.5 mg/mL (6.12 mM); Clear solution; Need ultrasonic Add each solvent one by one: 10% DMSO >> 90% corn oil Solubility: 2.5 mg/mL (6.12 mM); Clear solution; Need ultrasonic 					

BIOLOGICAL ACTIVITY

Description	MU1742 is a probe for CK1δ and CK1ε protein kinases ^[1] .
IC₅₀ & Target	CK1δ

REFERENCES

[1]. MU1742 Chemical probe for CK1δ and CK1ε protein kinases

Caution: Product has not been fully validated for medical applications. For research use only.

Tel: 609-228-6898

Fax: 609-228-5909

E-mail: tech@MedChemExpress.com

Address: 1 Deer Park Dr, Suite Q, Monmouth Junction, NJ 08852, USA