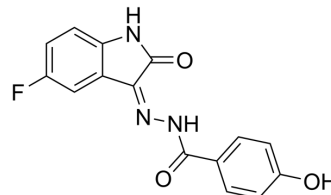


c-Met-IN-15

Cat. No.:	HY-148279
CAS No.:	330572-32-2
Molecular Formula:	C ₁₅ H ₁₀ FN ₃ O ₃
Molecular Weight:	299.26
Target:	c-Met/HGFR
Pathway:	Protein Tyrosine Kinase/RTK
Storage:	Please store the product under the recommended conditions in the Certificate of Analysis.



BIOLOGICAL ACTIVITY

Description

c-Met-IN-15 (compound S3) is a c-Met kinase inhibitor. c-Met-IN-15 inhibits c-Met kinase activity of 21.1% at the concentration of 10 μ M^[1].

REFERENCES

[1]. Liang Z, et, al. Identification and synthesis of N¹-(2-oxoindolin-3-ylidene)hydrazide derivatives against c-Met kinase. *Bioorg Med Chem Lett*. 2011 Jun 15;21(12):3749-54.

Caution: Product has not been fully validated for medical applications. For research use only.

Tel: 609-228-6898

Fax: 609-228-5909

E-mail: tech@MedChemExpress.com

Address: 1 Deer Park Dr, Suite Q, Monmouth Junction, NJ 08852, USA