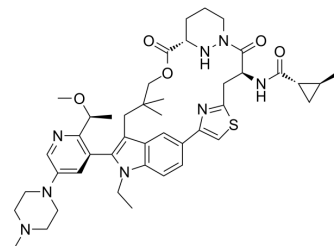


RMC-6236

Cat. No.:	HY-148439		
CAS No.:	2765081-21-6		
Molecular Formula:	C ₄₄ H ₅₈ N ₈ O ₅ S		
Molecular Weight:	811.05		
Target:	Ras		
Pathway:	GPCR/G Protein; MAPK/ERK Pathway		
Storage:	Powder	-20°C	3 years
	In solvent	-80°C	6 months
		-20°C	1 month



SOLVENT & SOLUBILITY

In Vitro

DMSO : 250 mg/mL (308.24 mM; Need ultrasonic)

Concentration	Mass		
	1 mg	5 mg	10 mg
1 mM	1.2330 mL	6.1648 mL	12.3297 mL
5 mM	0.2466 mL	1.2330 mL	2.4659 mL
10 mM	0.1233 mL	0.6165 mL	1.2330 mL

Please refer to the solubility information to select the appropriate solvent.

BIOLOGICAL ACTIVITY

Description

RMC-6236 (Compound A122) is a potent RAS(ON)^{MULTI} inhibitor and can be used for the research of cancer^[1].

IC₅₀ & Target

KRas G12D

In Vitro

RMC-6236 (Compound A122) (5 days) inhibits cell viability with an IC₅₀ of 1-10 μM against AsPC-1 (K-Ras G12D)^[1]. MCE has not independently confirmed the accuracy of these methods. They are for reference only.

REFERENCES

[1]. Ethan AHLER, et al. Use of sos1 inhibitors to treat malignancies with shp2 mutations. Patent WO2022060583A1.

Caution: Product has not been fully validated for medical applications. For research use only.

Tel: 609-228-6898

Fax: 609-228-5909

E-mail: tech@MedChemExpress.com

Address: 1 Deer Park Dr, Suite Q, Monmouth Junction, NJ 08852, USA