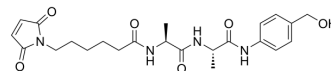


## MC-Ala-Ala-PAB

|                    |   |
|--------------------|---|
| Cat. No.:          | HY-148464   |
| CAS No.:           | 1949793-44-5  |
| Molecular Formula: | C <sub>23</sub> H <sub>30</sub> N <sub>4</sub> O <sub>6</sub>                             |
| Molecular Weight:  | 458.51  |
| Target:            | ADC Linker  |
| Pathway:           | Antibody-drug Conjugate/ADC Related   |
| Storage:           | Please store the product under the recommended conditions in the Certificate of Analysis. |



### BIOLOGICAL ACTIVITY

|                           |  |
|---------------------------|--|
| Description               | MC-Ala-Ala-PAB is a cleavable ADC linker. Fmoc-Ala-Ala-PAB can be used in the synthesis of antibody-drug conjugates (ADCs) [1].  |
| IC <sub>50</sub> & Target | Cleavable  |
| In Vitro                  | ADCs are comprised of an antibody to which is attached an ADC cytotoxin through an ADC linker <sup>[1]</sup> . MCE has not independently confirmed the accuracy of these methods. They are for reference only. |

### REFERENCES

[1]. Wayne C Widdison, et al. Development of Anilino-Maytansinoid ADCs that Efficiently Release Cytotoxic Metabolites in Cancer Cells and Induce High Levels of Bystander Killing. *Bioconjug Chem.* 2015 Nov 18;26(11):2261-78.

**Caution: Product has not been fully validated for medical applications. For research use only.**

Tel: 609-228-6898

Fax: 609-228-5909

E-mail: tech@MedChemExpress.com

Address: 1 Deer Park Dr, Suite Q, Monmouth Junction, NJ 08852, USA