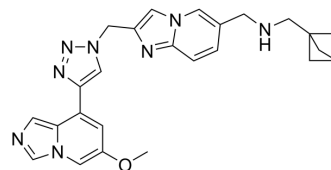


## METTL3-IN-2

Cat. No.:	HY-148468
CAS No.:	2767258-88-6
Molecular Formula:	C <sub>25</sub> H <sub>26</sub> N <sub>8</sub> O
Molecular Weight:	454.53
Target:	METTL3
Pathway:	Epigenetics
Storage:	Please store the product under the recommended conditions in the Certificate of Analysis.



### BIOLOGICAL ACTIVITY

<b>Description</b>	METTL3-IN-2 (compound 28) is a METTL3 inhibitor with an IC <sub>50</sub> value of 6.1 nM. METTL3-IN-2 inhibits cell proliferation of Caov3 cancer cells <sup>[1]</sup> .								
<b>In Vitro</b>	<p>METTL3-IN-2 inhibits METTL3 activity with an IC<sub>50</sub> value of 6.1 nM<sup>[1]</sup>.</p> <p>METTL3-IN-2 (0-30 μM; 120 h) inhibits cell proliferation of Caov3 cells<sup>[1]</sup>.</p> <p>METTL3-IN-2 (0-30 μM; 120 h) inhibits growth of KASUMI cells with an IC<sub>50</sub> value of 315.8 nM<sup>[1]</sup>.</p> <p>MCE has not independently confirmed the accuracy of these methods. They are for reference only.</p> <p>Cell Proliferation Assay<sup>[1]</sup></p> <table border="1"> <tr> <td>Cell Line:</td> <td>Caov3 cell line</td> </tr> <tr> <td>Concentration:</td> <td>0-30 μM</td> </tr> <tr> <td>Incubation Time:</td> <td>120 hours</td> </tr> <tr> <td>Result:</td> <td>Inhibited cell proliferation of Caov3 cells with an IC<sub>50</sub> value of 102.5 nM.</td> </tr> </table>	Cell Line:	Caov3 cell line	Concentration:	0-30 μM	Incubation Time:	120 hours	Result:	Inhibited cell proliferation of Caov3 cells with an IC <sub>50</sub> value of 102.5 nM.
Cell Line:	Caov3 cell line								
Concentration:	0-30 μM								
Incubation Time:	120 hours								
Result:	Inhibited cell proliferation of Caov3 cells with an IC <sub>50</sub> value of 102.5 nM.								

### REFERENCES

[1]. Hardick, DJ, et al. Preparation of heteroaromatic compounds as METTL3 inhibitory compounds. WO2022074379. 2022.

**Caution: Product has not been fully validated for medical applications. For research use only.**

Tel: 609-228-6898

Fax: 609-228-5909

E-mail: tech@MedChemExpress.com

Address: 1 Deer Park Dr, Suite Q, Monmouth Junction, NJ 08852, USA