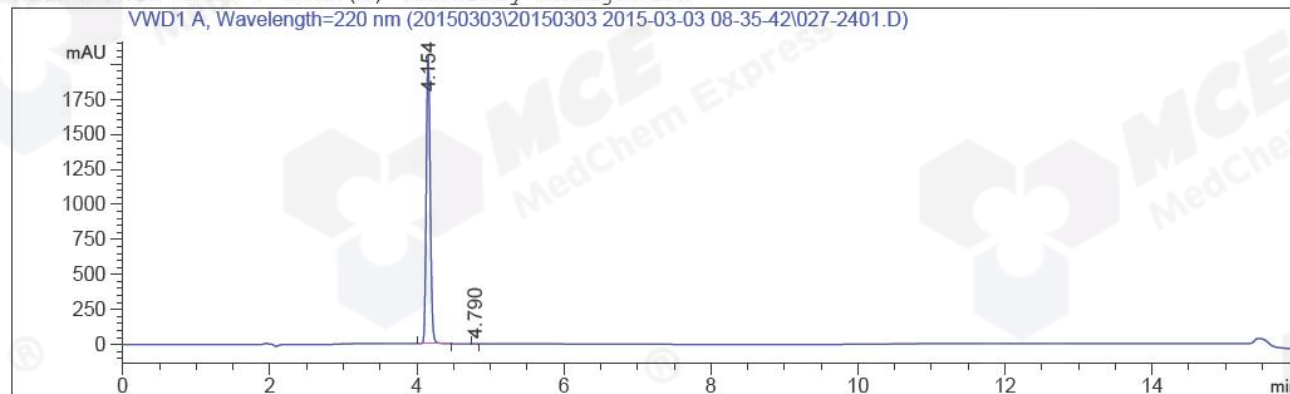


=====
Acq. Operator : CYL(HPLC-10) Seq. Line : 24
Acq. Instrument : Instrument 1 Location : Vial 27
Injection Date : 2015-03-03 17:21:43 Inj : 1
Inj Volume : 5.000 µl
Acq. Method : D:\CHEM\DATA\20150303\20150303 2015-03-03 08-35-42\10-80A,220NM.M
Last changed : 2014-08-01 16:06:31 by XLY(HPLC-10)
Analysis Method : D:\CHEM\METHODS\BLHM-290_17-H01P.M
Last changed : 2015-03-04 08:48:55 by CYL(HPLC-10)
(modified after loading)
Catalog No : HY-14859 Batch#15179
A-RP-93

Additional Info : Peak(s) manually integrated



=====
Area Percent Report
=====

Sorted By : Signal
Multiplier: : 1.0000
Dilution: : 1.0000
Use Multiplier & Dilution Factor with ISTDs

Signal 1: VWD1 A, Wavelength=220 nm

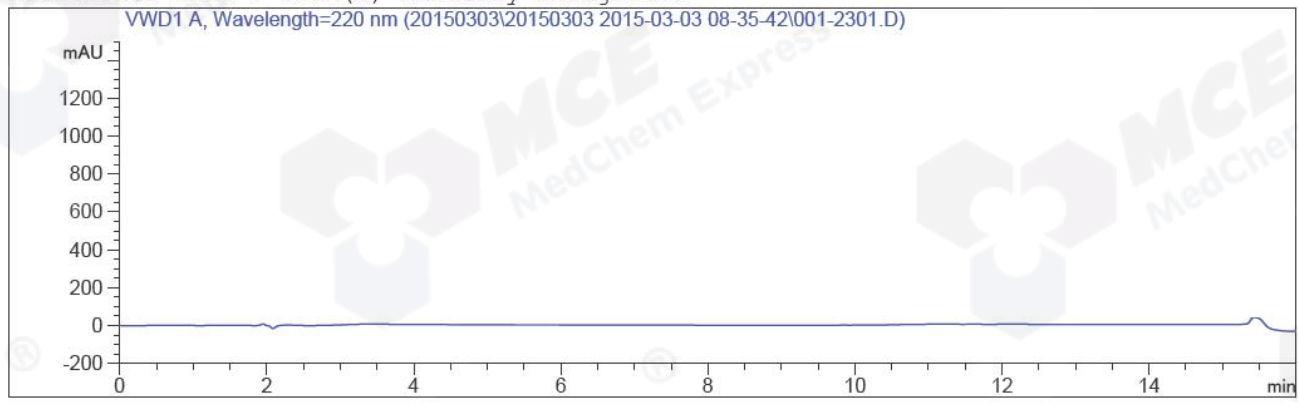
Peak #	RetTime [min]	Type	Width [min]	Area [mAU*s]	Height [mAU]	Area %
1	4.154	BB	0.0590	7739.35449	2052.70435	99.9925
2	4.790	MM	0.0550	5.84205e-1	1.77004e-1	7.548e-3

Totals : 7739.93870 2052.88135

=====
*** End of Report ***

=====
Acq. Operator : CYL(HPLC-10) Seq. Line : 23
Acq. Instrument : Instrument 1 Location : Vial 1
Injection Date : 2015-03-03 17:03:21 Inj : 1
Inj Volume : 5.000 µl
Acq. Method : D:\CHEM\DATA\20150303\20150303 2015-03-03 08-35-42\10-80A,220NM.M
Last changed : 2014-08-01 16:06:31 by XLY(HPLC-10)
Analysis Method : D:\CHEM\METHODS\BLHM-290_17-H01P.M
Last changed : 2015-03-04 08:49:19 by CYL(HPLC-10)
(modified after loading)
Catalog No : HY-14859 Batch#15179
A-RP-93

Additional Info : Peak(s) manually integrated



=====
Area Percent Report
=====

Sorted By : Signal
Multiplier: : 1.0000
Dilution: : 1.0000
Use Multiplier & Dilution Factor with ISTDs

No peaks found

=====
*** End of Report ***
=====