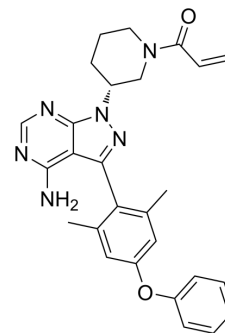


BTK-IN-23

| | |
|--------------------|---|
| Cat. No.: | HY-148594 |
| CAS No.: | 2573048-11-8 |
| Molecular Formula: | C ₂₇ H ₂₈ N ₆ O ₂ |
| Molecular Weight: | 468.55 |
| Target: | Btk |
| Pathway: | Protein Tyrosine Kinase/RTK |
| Storage: | Please store the product under the recommended conditions in the Certificate of Analysis. |



BIOLOGICAL ACTIVITY

| | | | | | | | | | |
|--------------------|---|------------|-------------|----------------|---------------------|------------------|-----|---------|------------------------------------|
| Description | BTK-IN-23 is a BTK inhibitor (IC ₅₀ : 12.8 nM). BTK-IN-23 also inhibits BLX and BMX with IC ₅₀ s of 35.6 and 5.7 nM respectively. BTK-IN-23 shows improved kinase selectivity compared to Ibrutinib (HY-10997) ^[1] . | | | | | | | | |
| In Vitro | <p>BTK-IN-23 (Compound 3) inhibits BTK autophosphorylation in Jeko-1 cells, with an IC₅₀ of 314 nM^[1]. MCE has not independently confirmed the accuracy of these methods. They are for reference only.</p> <p>Western Blot Analysis^[1]</p> <table border="1"> <tr> <td>Cell Line:</td> <td>Jeko-1 cell</td> </tr> <tr> <td>Concentration:</td> <td>0.01, 0.1, 1, 10 μM</td> </tr> <tr> <td>Incubation Time:</td> <td>2 h</td> </tr> <tr> <td>Result:</td> <td>Inhibited BTK autophosphorylation.</td> </tr> </table> | Cell Line: | Jeko-1 cell | Concentration: | 0.01, 0.1, 1, 10 μM | Incubation Time: | 2 h | Result: | Inhibited BTK autophosphorylation. |
| Cell Line: | Jeko-1 cell | | | | | | | | |
| Concentration: | 0.01, 0.1, 1, 10 μM | | | | | | | | |
| Incubation Time: | 2 h | | | | | | | | |
| Result: | Inhibited BTK autophosphorylation. | | | | | | | | |

REFERENCES

[1]. Sean T. Toenjes, et al. Controlling Ibrutinib's Conformations about Its Heterobiaryl Axis to Increase BTK Selectivity. ACS Med. Chem. Lett. 2023. <https://doi.org/10.1021/acsmchemlett.2c00523>

Caution: Product has not been fully validated for medical applications. For research use only.

Tel: 609-228-6898

Fax: 609-228-5909

E-mail: tech@MedChemExpress.com

Address: 1 Deer Park Dr, Suite Q, Monmouth Junction, NJ 08852, USA