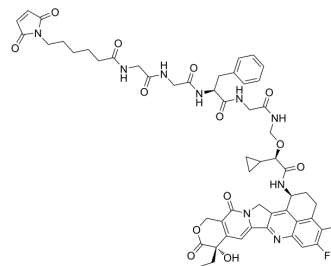


## MC-Gly-Gly-Phe-Gly-(R)-Cyclopropane-Exatecan

<b>Cat. No.:</b>	HY-148668
<b>CAS No.:</b>	2414254-51-4
<b>Molecular Formula:</b>	C <sub>55</sub> H <sub>60</sub> FN <sub>9</sub> O <sub>13</sub>
<b>Molecular Weight:</b>	1074.12
<b>Target:</b>	Topoisomerase; Drug-Linker Conjugates for ADC
<b>Pathway:</b>	Cell Cycle/DNA Damage; Antibody-drug Conjugate/ADC Related
<b>Storage:</b>	-20°C, sealed storage, away from moisture and light * In solvent : -80°C, 6 months; -20°C, 1 month (sealed storage, away from moisture and light)



### SOLVENT & SOLUBILITY

<b>In Vitro</b>	DMSO : 100 mg/mL (93.10 mM; Need ultrasonic)				
		Solvent Concentration	Mass		
	<b>Preparing Stock Solutions</b>		1 mg	5 mg	10 mg
		1 mM	0.9310 mL	4.6550 mL	9.3099 mL
		5 mM	0.1862 mL	0.9310 mL	1.8620 mL
	10 mM	0.0931 mL	0.4655 mL	0.9310 mL	
Please refer to the solubility information to select the appropriate solvent.					
<b>In Vivo</b>	1. Add each solvent one by one: 10% DMSO >> 40% PEG300 >> 5% Tween-80 >> 45% saline Solubility: ≥ 2.5 mg/mL (2.33 mM); Clear solution  2. Add each solvent one by one: 10% DMSO >> 90% corn oil Solubility: ≥ 2.5 mg/mL (2.33 mM); Clear solution				

### BIOLOGICAL ACTIVITY

<b>Description</b>	MC-Gly-Gly-Phe-Gly-(R)-Cyclopropane-Exatecan is a agent-linker conjugates for ADC, consisting Exatecan (HY-13631). Exatecan is a DNA Topoisomerase I inhibitor (IC <sub>50</sub> =2.2 μM) <sup>[1]</sup> .
<b>IC<sub>50</sub> &amp; Target</b>	Topoisomerase I

### REFERENCES

[1]. Ying Hua, et al. Anti-B7H3 antibody-exatecan analog conjugate and medicinal use thereof: World Intellectual Property Organization, WO2020063673[P]. 2020-04-02.

---

**Caution: Product has not been fully validated for medical applications. For research use only.**

Tel: 609-228-6898

Fax: 609-228-5909

E-mail: [tech@MedChemExpress.com](mailto:tech@MedChemExpress.com)

Address: 1 Deer Park Dr, Suite Q, Monmouth Junction, NJ 08852, USA