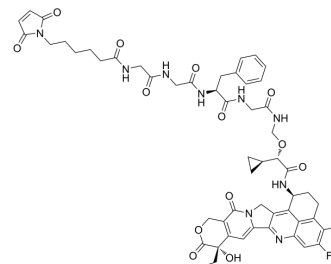


MC-Gly-Gly-Phe-Gly-(S)-Cyclopropane-Exatecan

Cat. No.:	HY-148668A
CAS No.:	2414254-52-5
Molecular Formula:	C ₅₅ H ₆₀ FN ₉ O ₁₃
Molecular Weight:	1074.12
Target:	Drug-Linker Conjugates for ADC; Topoisomerase
Pathway:	Antibody-drug Conjugate/ADC Related; Cell Cycle/DNA Damage
Storage:	-20°C, sealed storage, away from moisture * In solvent : -80°C, 6 months; -20°C, 1 month (sealed storage, away from moisture)



BIOLOGICAL ACTIVITY

Description	MC-Gly-Gly-Phe-Gly-(R)-Cyclopropane-Exatecan is a agent-linker conjugates for ADC, consisting Exatecan (HY-13631). Exatecan is a DNA Topoisomerase I inhibitor (IC ₅₀ =2.2 μM) ^[1] .
IC ₅₀ & Target	Camptothecins

REFERENCES

[1]. Ying Hua, et al. Anti-B7H3 antibody-exatecan analog conjugate and medicinal use thereof: World Intellectual Property Organization, WO2020063673. 2020-04-02.

Caution: Product has not been fully validated for medical applications. For research use only.

Tel: 609-228-6898

Fax: 609-228-5909

E-mail: tech@MedChemExpress.com

Address: 1 Deer Park Dr, Suite Q, Monmouth Junction, NJ 08852, USA