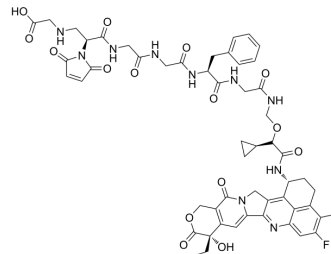


Gly-Mal-Gly-Gly-Phe-Gly-amide-methylcyclopropane-Exatecan

Cat. No.:	HY-148812
CAS No.:	2766786-76-7
Molecular Formula:	C ₅₄ H ₅₇ FN ₁₀ O ₁₅
Molecular Weight:	1105.09
Target:	Drug-Linker Conjugates for ADC; Topoisomerase
Pathway:	Antibody-drug Conjugate/ADC Related; Cell Cycle/DNA Damage
Storage:	Please store the product under the recommended conditions in the Certificate of Analysis.



BIOLOGICAL ACTIVITY

Description	Gly-Mal-Gly-Gly-Phe-Gly-amide-methylcyclopropane-Exatecan is used for ADC Synthesis ^[1] .
IC ₅₀ & Target	Camptothecins

REFERENCES

[1]. Zhu Yi, et al. Camptothecin derivative and ligand-drug conjugate thereof. World Intellectual Property Organization, WO2022078260 A1. 2022-04-21.

Caution: Product has not been fully validated for medical applications. For research use only.

Tel: 609-228-6898

Fax: 609-228-5909

E-mail: tech@MedChemExpress.com

Address: 1 Deer Park Dr, Suite Q, Monmouth Junction, NJ 08852, USA