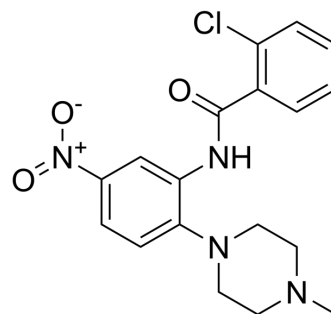


WDR5-0102

| | |
|--------------------|--|
| Cat. No.: | HY-148817 |
| CAS No.: | 824960-50-1 |
| Molecular Formula: | C ₁₈ H ₁₉ ClN ₄ O ₃ |
| Molecular Weight: | 374.82 |
| Target: | WDR5 |
| Pathway: | Epigenetics |
| Storage: | 4°C, protect from light * In solvent : -80°C, 6 months; -20°C, 1 month (protect from light) |



SOLVENT & SOLUBILITY

| | | | | | | |
|---|---|--------------------------|-----------|-----------|------------|------------|
| In Vitro | DMSO : 50 mg/mL (133.40 mM; ultrasonic and warming and heat to 60°C) | | | | | |
| | Preparing Stock Solutions | Solvent Concentration | Mass | | | |
| | | | 1 mg | 5 mg | 10 mg | |
| | | | 1 mM | 2.6679 mL | 13.3397 mL | 26.6795 mL |
| | | | 5 mM | 0.5336 mL | 2.6679 mL | 5.3359 mL |
| 10 mM | 0.2668 mL | 1.3340 mL | 2.6679 mL | | | |
| Please refer to the solubility information to select the appropriate solvent. | | | | | | |
| In Vivo | 1. Add each solvent one by one: 10% DMSO >> 40% PEG300 >> 5% Tween-80 >> 45% saline Solubility: ≥ 1.67 mg/mL (4.46 mM); Clear solution | | | | | |

BIOLOGICAL ACTIVITY

| | |
|-------------|--|
| Description | WDR5-0102 is an inhibitor targeting WDR5-MLL1 interface ($K_{dis}=7 \mu\text{M}$, $K_d=4 \mu\text{M}$). WDR5-0102 suppresses MLL1 HMT activity, but not human H3K4 methyltransferase SETD7 and six other HMTs: G9a, EHMT1, SUV39H2, SETD8, PRMT3, and PRMT5 ^{[1][2]} . |
|-------------|--|

REFERENCES

[1]. Ye X, et al. The identification of novel small-molecule inhibitors targeting WDR5-MLL1 interaction through fluorescence polarization based high-throughput screening. *Bioorg Med Chem Lett*. 2019 Feb 15;29(4):638-645.

[2]. Chen X, et al. Targeting WD Repeat-Containing Protein 5 (WDR5): A Medicinal Chemistry Perspective. *J Med Chem*. 2021 Aug 12;64(15):10537-10556.

Caution: Product has not been fully validated for medical applications. For research use only.

Tel: 609-228-6898

Fax: 609-228-5909

E-mail: tech@MedChemExpress.com

Address: 1 Deer Park Dr, Suite Q, Monmouth Junction, NJ 08852, USA