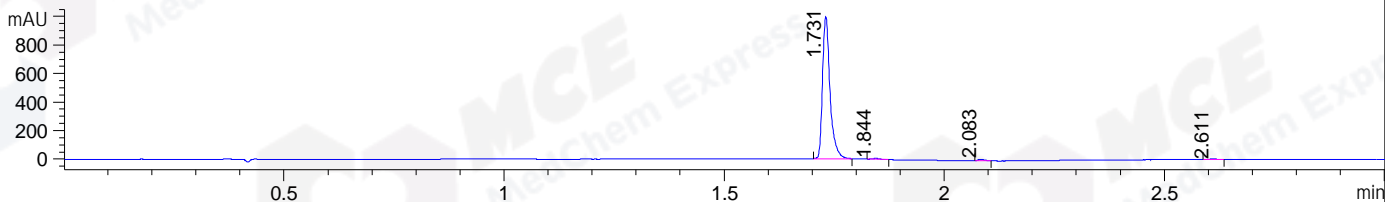
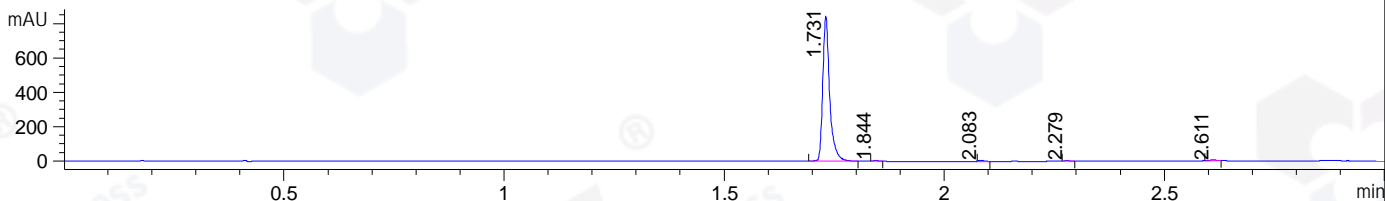


File ..1\DATA\2019\20190709\623\BIZ2019-709-CXL9.D Tgt Mass (CHM):
 Injection Date : 9 Jul 19 2:56 pm +0800 Seq. Line : 65
 Sample Name : BIZ2019-709-CXL9 Location : P1-B-04
 Acq. Operator : ZJ_1432 Inj : 1
 Spec. Reported : MS Integration Inj Volume : 1 ul
 Acq. Method : D:\Chem32\1\data\2019\20190709\623\1-POS-3MIN.M
 Analysis Method : D:\CHEM32\1\DATA\2019\20190709\623\1-POS-3MIN.M
 Catalog No : HY-14882 Batch#43251
 Method Info : Mobile Phase: A: water(0.01%TFA) B:ACN(0.01%TFA)
 Gradient: 5% to 95%B within 1.3 min
 Flow Rate :1.8ml/min
 Column :SunFire C18, 4.6*50mm,3.5um A-RP-433
 Oven Temperature : 45

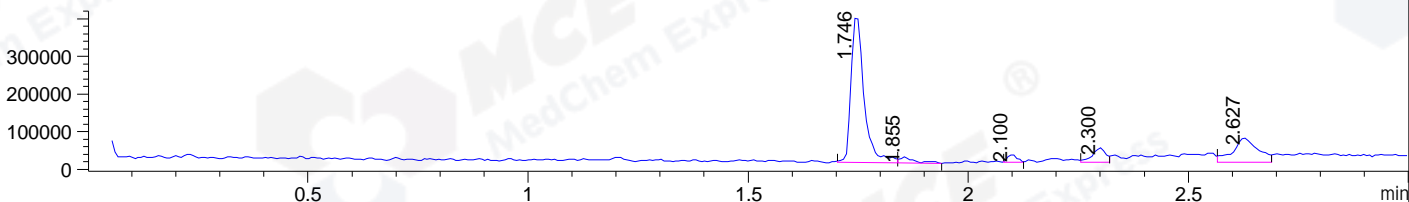
DAD1 B, Sig=214,4 Ref=off



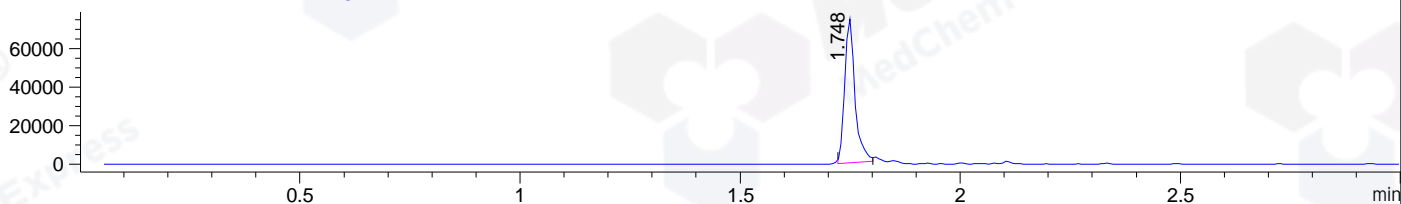
DAD1 C, Sig=254,4 Ref=off



MSD1 TIC, MS File ES-API, Pos, Scan, Frag: 70



Ion 697.37, MSD1 697.37, Target Mass 696.37 +H Positive, EIC=697.07:698.07



Integration Results for DAD1 B, Sig=214,4 Ref=off

RetTim	Width	Area	Height	Area%	MS (+)
1.73	0.02	1191.00	998.10	98.07	349
1.84	0.02	6.99	6.08	0.58	349
2.08	0.02	11.53	11.24	0.95	130
2.61	0.02	4.91	3.58	0.40	466

Integration Results for DAD1 C, Sig=254,4 Ref=off

RetTim	Width	Area	Height	Area%	MS (+)
1.73	0.02	921.36	843.90	98.16	349
1.84	0.01	3.08	3.54	0.33	349
2.08	0.01	6.00	6.75	0.64	130
2.28	0.02	2.87	2.74	0.31	130
2.61	0.02	5.32	3.99	0.57	466

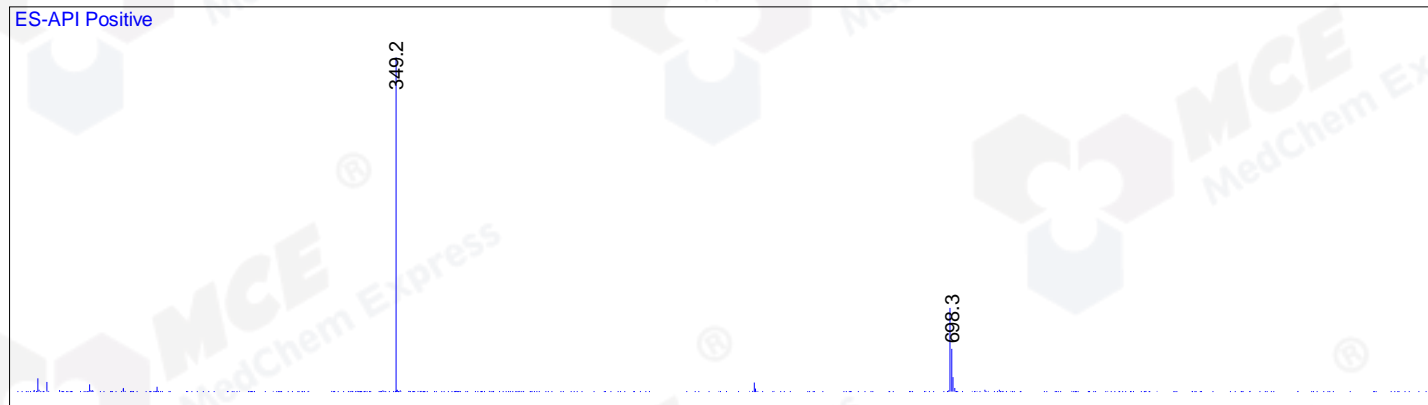
Integration Results for MSD1 TIC, MS File

RetTim	Width	Area	Height	Area%	MS (+)
--------	-------	------	--------	-------	--------

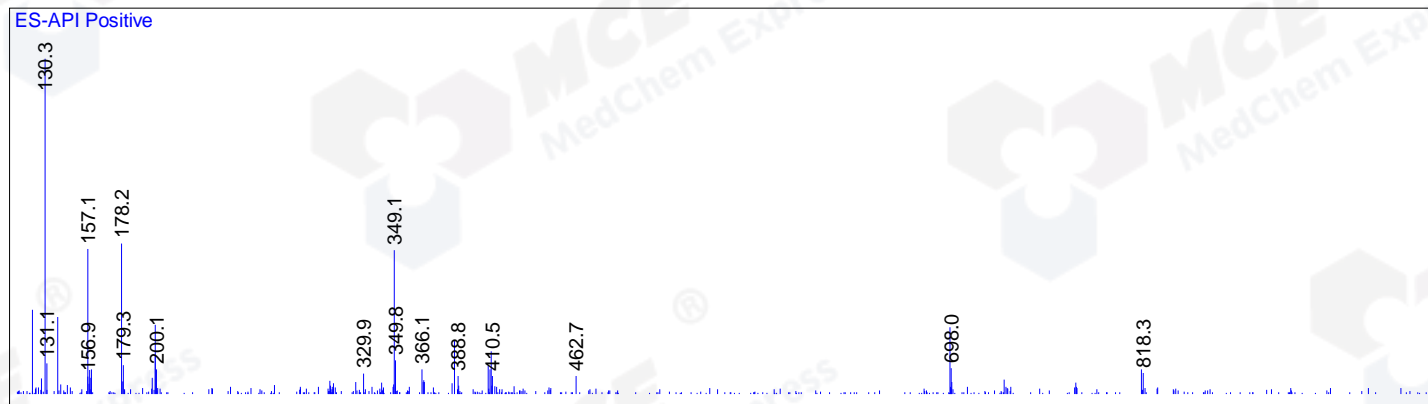
1.75	0.03	801737.63	397599.50	66.68	349
1.85	0.04	42641.29	16341.11	3.55	130
2.10	0.02	29113.63	20013.64	2.42	130
2.30	0.03	78194.81	37762.94	6.50	130
2.63	0.05	250658.83	64127.07	20.85	466

Ret. Time: 1.75

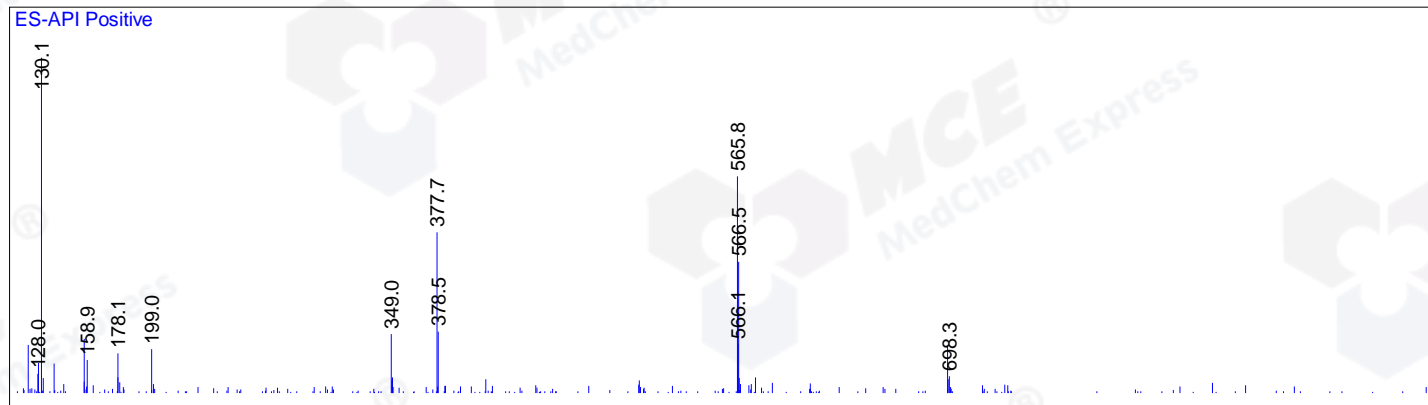
<<<< POSITIVE SPECTRA >>>>



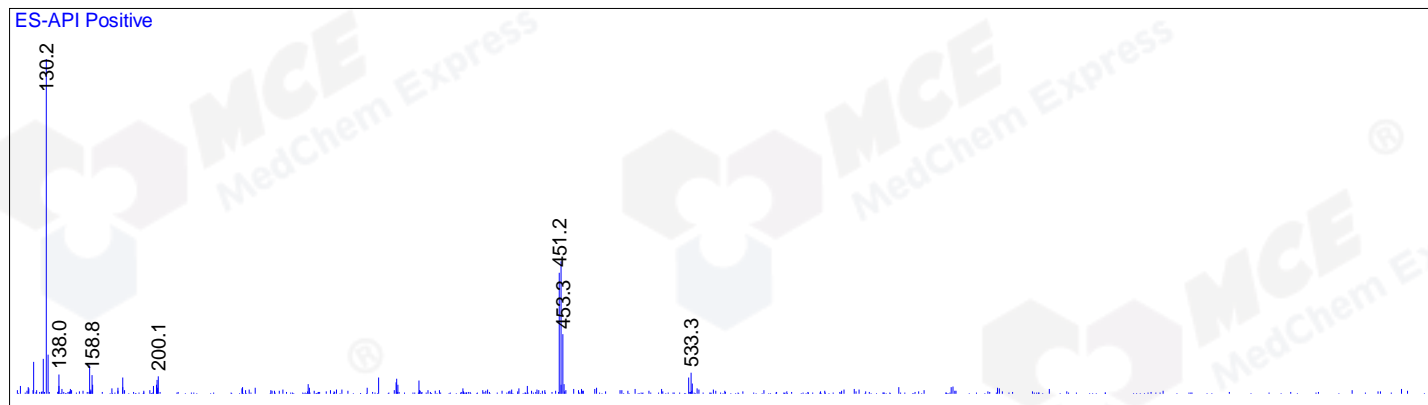
Ret. Time: 1.85



Ret. Time: 2.10



Ret. Time: 2.30



Ret. Time: 2.63

