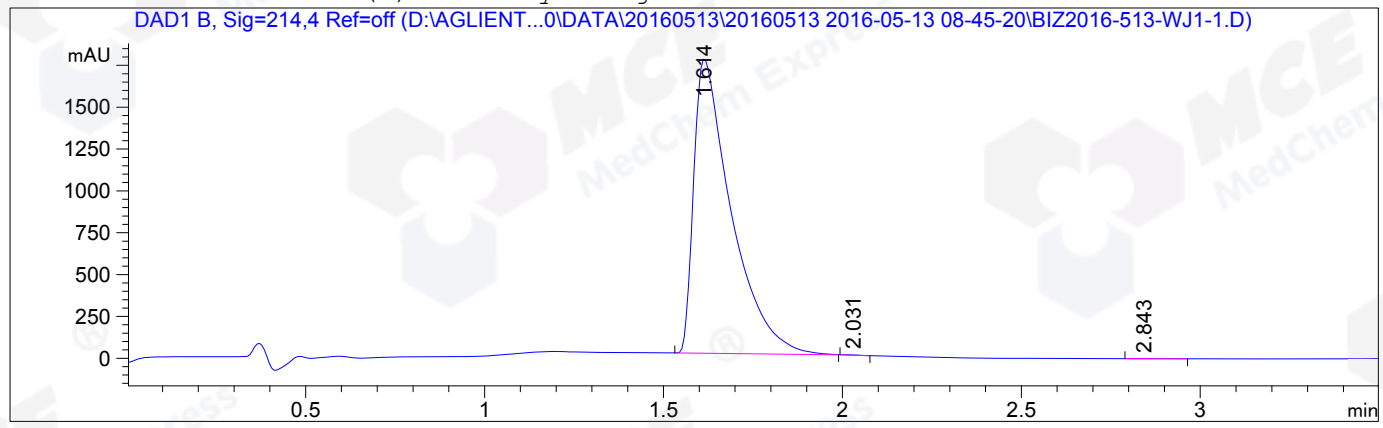


=====
Acq. Operator : Su Xiao Ying(LCMS-02) Seq. Line : 55
Acq. Instrument : HY-LCMS-02 Location : P1-A-03
Injection Date : 5/13/2016 2:15:44 PM Inj : 1
Inj Volume : 3.000 µl
Different Inj Volume from Sample Entry Actual Inj Volume : 15.000 µl
Acq. Method : D:\AGLIENT 1260\DATA\20160513\20160513 2016-05-13 08-45-20\100-1000MS+3MIN-1.5_(0.02%FA).M
Last changed : 5/13/2016 8:45:20 AM by Su Xiao Ying(LCMS-02)
Analysis Method : D:\AGLIENT 1260\DATA\20160513\20160513 2016-05-13 08-45-20\100-1000MS+3MIN-1.5_(0.02%FA).M (Sequence Method)
Last changed : 5/13/2016 2:22:21 PM by Su Xiao Ying(LCMS-02)
(modified after loading)
Method Info : HY-365_5H01RS,M,A-RP-108, 210nm,23min

Catalog No : HY-14885 Batch#20373
A-RP-134

Additional Info : Peak(s) manually integrated



=====
Area Percent Report
=====

Sorted By : Signal
Multiplier : 1.0000
Dilution : 1.0000
Do not use Multiplier & Dilution Factor with ISTDs

Signal 1: DAD1 B, Sig=214,4 Ref=off

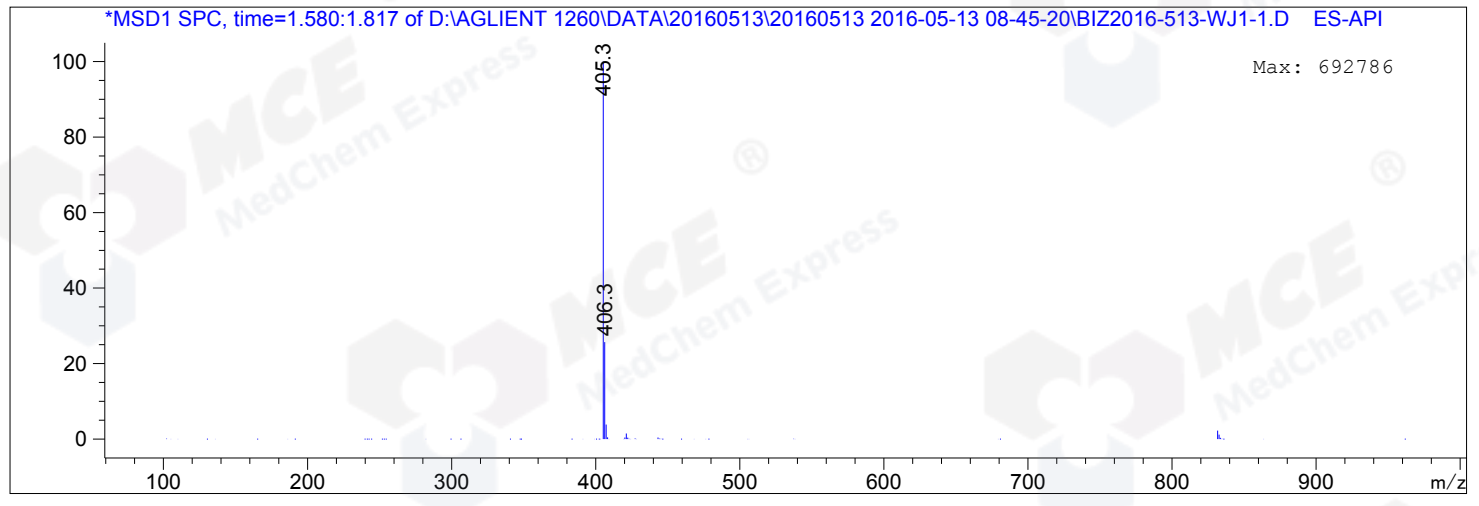
Peak #	RetTime [min]	Type	Width [min]	Area [mAU*s]	Height [mAU]	Area %
1	1.614	MM	0.1206	1.27616e4	1764.13672	99.9507
2	2.031	MM	0.0579	4.70911	1.35480	0.0369
3	2.843	BB	0.0436	1.58738	5.85641e-1	0.0124

Totals : 1.27679e4 1766.07716

=====
*** End of Report ***

MS Signal: MSD1 TIC, MS File, ES-API, Pos, Scan, Frag: 50
Spectra averaged over upper half of peaks.
Noise Cutoff: 1000 counts.
Reportable Ion Abundance: > 10%.

Retention Time (MS)	MS Area	Mol. Weight or Ion
1.626	18566734	406.30 I 405.30 I



*** End of Report ***