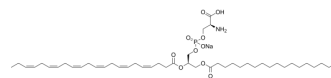


18:0,22:6 PS sodium

Cat. No.:	HY-148977
CAS No.:	474943-18-5
Molecular Formula:	C ₄₆ H ₇₇ NNaO ₁₀ P
Molecular Weight:	858.07
Target:	Endogenous Metabolite
Pathway:	Metabolic Enzyme/Protease
Storage:	Please store the product under the recommended conditions in the Certificate of Analysis.



BIOLOGICAL ACTIVITY

Description	18:0,22:6 PS sodium is a lipid component of synaptic vesicles and cholesterol, which can be used for metabolic research ^[1] .
--------------------	------------------------------------------------------------------------------------------------------------------------------------------

REFERENCES

[1]. Fealey ME, et al. Synaptotagmin I's Intrinsically Disordered Region Interacts with Synaptic Vesicle Lipids and Exerts Allosteric Control over C2A. *Biochemistry*. 2016 May 31;55(21):2914-26.

Caution: Product has not been fully validated for medical applications. For research use only.

Tel: 609-228-6898

Fax: 609-228-5909

E-mail: tech@MedChemExpress.com

Address: 1 Deer Park Dr, Suite Q, Monmouth Junction, NJ 08852, USA