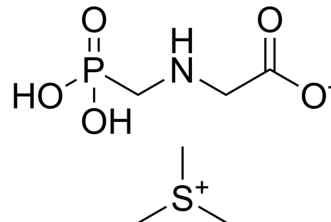


Sulfosate

Cat. No.:	HY-149199
CAS No.:	81591-81-3
Molecular Formula:	C ₆ H ₁₆ NO ₅ PS
Molecular Weight:	245.23
Target:	Others
Pathway:	Others
Storage:	Please store the product under the recommended conditions in the Certificate of Analysis.



BIOLOGICAL ACTIVITY

Description	Sulfosate is a post-emergence, non-selective and translocated herbicide. Sulfosate can be used for weed control ^{[1][2]} .
--------------------	---

REFERENCES

- [1]. F K Opong, et al. Effects of sulfosate on weed suppression, cocoa pod set, and yield of cocoa and coffee. Vol. 39 No. 2 (2006). Ghana Journal of Agricultural Science.
- [2]. Nilson G. Fleck, et al. Effects of application parameters on desiccation action of herbicide sulfosate on rice. Planta daninha 1999; 17(1): 139-149.

Caution: Product has not been fully validated for medical applications. For research use only.

Tel: 609-228-6898

Fax: 609-228-5909

E-mail: tech@MedChemExpress.com

Address: 1 Deer Park Dr, Suite Q, Monmouth Junction, NJ 08852, USA