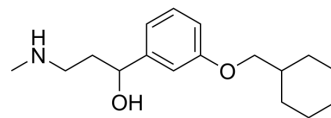


RPE65-IN-1

Cat. No.:	HY-149325
CAS No.:	1141779-07-8
Molecular Formula:	C ₁₇ H ₂₇ NO ₂
Molecular Weight:	277.4
Target:	Others
Pathway:	Others
Storage:	Please store the product under the recommended conditions in the Certificate of Analysis.



BIOLOGICAL ACTIVITY

Description	RPE65-IN-1(Compound 16e) is a potent RPE65 inhibitor, which can be used in retinopathy-related research ^[1] .
-------------	--

REFERENCES

[1]. Marco Bassetto, et al. Tuning the Metabolic Stability of Visual Cycle Modulators through Modification of an RPE65 Recognition Motif. J Med Chem. 2023 Jun 22;66(12):8140-8158.

Caution: Product has not been fully validated for medical applications. For research use only.

Tel: 609-228-6898

Fax: 609-228-5909

E-mail: tech@MedChemExpress.com

Address: 1 Deer Park Dr, Suite Q, Monmouth Junction, NJ 08852, USA