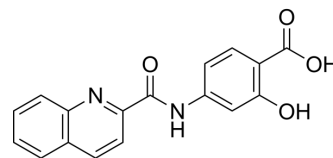


## Mtb-IN-2

Cat. No.:	HY-149346
CAS No.:	2861190-30-7
Molecular Formula:	C <sub>17</sub> H <sub>12</sub> N <sub>2</sub> O <sub>4</sub>
Molecular Weight:	308.29
Target:	Bacterial
Pathway:	Anti-infection
Storage:	Please store the product under the recommended conditions in the Certificate of Analysis.



### BIOLOGICAL ACTIVITY

#### Description

Mtb-IN-2 (compound 10c) is an antimicrobial agent against *Mycobacterium tuberculosis* (Mtb), without cytotoxicity. Mtb-IN-2 significantly decreases colony-forming units (CFU) in spleen of murine tuberculosis models, and distinguishes both drug-sensitive and drug-resistant Mtb H37Rv strains. Mtb-IN-2 affects methionine metabolism but not folate pathway directly.

### REFERENCES

[1]. Nawrot DE, et al. Antimycobacterial pyridine carboxamides: From design to in vivo activity. *Eur J Med Chem.* 2023 Oct 5;258:115617.

**Caution: Product has not been fully validated for medical applications. For research use only.**

Tel: 609-228-6898

Fax: 609-228-5909

E-mail: [tech@MedChemExpress.com](mailto:tech@MedChemExpress.com)

Address: 1 Deer Park Dr, Suite Q, Monmouth Junction, NJ 08852, USA