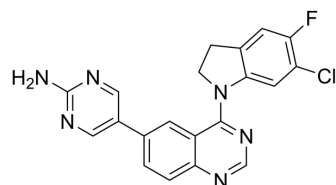


## MTX-241F

Cat. No.:	HY-149556
Molecular Formula:	C <sub>20</sub> H <sub>14</sub> ClFN <sub>6</sub>
Molecular Weight:	392.82
Target:	EGFR; PI3K
Pathway:	JAK/STAT Signaling; Protein Tyrosine Kinase/RTK; PI3K/Akt/mTOR
Storage:	Please store the product under the recommended conditions in the Certificate of Analysis.



## BIOLOGICAL ACTIVITY

### Description

MTX-241F is a selective small molecule inhibitor targeting EGFR and PI3 kinase family members. MTX-241F is able to penetrate the blood-brain barrier and control tumor growth over the long term. MTX-241F exhibits radiosensitizing activity in patient-derived DIPG neurospheres and may be used in the study of diffuse intrinsic pontine glioma (DIPG)<sup>[1]</sup>.

## REFERENCES

[1]. Sharma M, et al. Targeting DNA Repair and Survival Signaling in Diffuse Intrinsic Pontine Gliomas to Prevent Tumor Recurrence. *Mol Cancer Ther.* 2023 Sep 19..

**Caution: Product has not been fully validated for medical applications. For research use only.**

Tel: 609-228-6898

Fax: 609-228-5909

E-mail: [tech@MedChemExpress.com](mailto:tech@MedChemExpress.com)

Address: 1 Deer Park Dr, Suite Q, Monmouth Junction, NJ 08852, USA