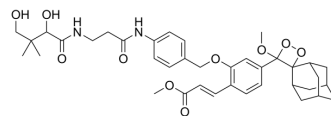


CL-Pa

Cat. No.:	HY-149594
Molecular Formula:	C ₃₈ H ₄₈ N ₂ O ₁₀
Molecular Weight:	692.8
Target:	Others
Pathway:	Others
Storage:	Please store the product under the recommended conditions in the Certificate of Analysis.



BIOLOGICAL ACTIVITY

Description

CL-Pa is a chemiluminescent probe suitable for detection of urinary Vanin-1. CL-Pa can be used to detect drug-induced acute kidney injury (AKI) through urinalysis^[1].

REFERENCES

[1]. Yurong Feng, et al. Vanin-1-Activated Chemiluminescent Probe: Help to Early Diagnosis of Acute Kidney Injury with High Signal-to-Noise Ratio through Urinalysis. Anal Chem. 2023 Oct 3;95(39):14754-14761.

Caution: Product has not been fully validated for medical applications. For research use only.

Tel: 609-228-6898

Fax: 609-228-5909

E-mail: tech@MedChemExpress.com

Address: 1 Deer Park Dr, Suite Q, Monmouth Junction, NJ 08852, USA