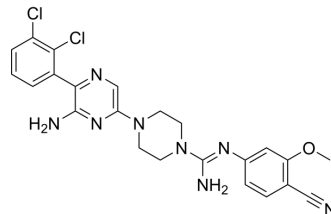


## SHP2-IN-22

Cat. No.:	HY-149607
CAS No.:	2802453-88-7
Molecular Formula:	C <sub>23</sub> H <sub>22</sub> Cl <sub>2</sub> N <sub>8</sub> O
Molecular Weight:	497.38
Target:	SHP2
Pathway:	Protein Tyrosine Kinase/RTK
Storage:	Please store the product under the recommended conditions in the Certificate of Analysis.



### BIOLOGICAL ACTIVITY

#### Description

SHP2-IN-22 is SHP2 allosteric inhibitor with an IC<sub>50</sub> value of 17.7 nM. SHP2-IN-22 inhibits the proliferation, migration, and invasion of MIA PaCa-2 pancreatic cancer cells. SHP2-IN-22 can be used for Kirsten rat sarcoma viral oncogene (KRAS) mutant cancer research<sup>[1]</sup>.

### REFERENCES

[1]. Hou Q, et al. Identification of a Novel, Potent, and Orally Bioavailable Guanidine-Based SHP2 Allosteric Inhibitor from Virtual Screening and Rational Structural Optimization for the Treatment of KRAS Mutant Cancers. *J Med Chem.* 2023 Oct 12;66(19):13646-13664.

**Caution: Product has not been fully validated for medical applications. For research use only.**

Tel: 609-228-6898

Fax: 609-228-5909

E-mail: tech@MedChemExpress.com

Address: 1 Deer Park Dr, Suite Q, Monmouth Junction, NJ 08852, USA