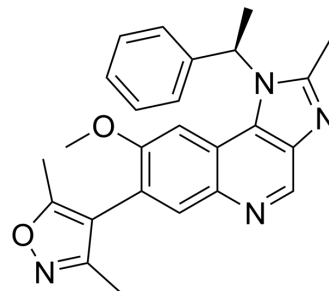


## BET-IN-20

Cat. No.:	HY-149735
CAS No.:	1300735-76-5
Molecular Formula:	C <sub>25</sub> H <sub>24</sub> N <sub>4</sub> O <sub>2</sub>
Molecular Weight:	412.48
Target:	Epigenetic Reader Domain; Apoptosis
Pathway:	Epigenetics; Apoptosis
Storage:	Please store the product under the recommended conditions in the Certificate of Analysis.



### BIOLOGICAL ACTIVITY

Description	BET-IN-20 (compound 10) is an inhibitor of BRD4 BD1 (IC <sub>50</sub> =1.9 nM) with anticancer activity. BET-IN-20 can promote acute myeloid leukemia (AML) cell apoptosis and arrest the cell cycle in the G <sub>0</sub> /G <sub>1</sub> phase. BET-IN-20 also inhibits c-Myc and CDK6 and enhances PARP cleavage <sup>[1]</sup> .
IC <sub>50</sub> & Target	IC <sub>50</sub> : 1.9 nM (BRD4 BD1) <sup>[1]</sup>

### REFERENCES

[1]. Yu S et al. Discovery of (R)-4-(8-methoxy-2-methyl-1-(1-phenylethyl)-1H-imidazo [4, 5-c] quinnolin-7-yl)-3, 5-dimethylisoxazole as a potent and selective BET inhibitor for treatment of acute myeloid leukemia (AML) guided by FEP calculation[J]. European Journal of Medicinal Chemistry, 2023: 115924.

**Caution: Product has not been fully validated for medical applications. For research use only.**

Tel: 609-228-6898

Fax: 609-228-5909

E-mail: tech@MedChemExpress.com

Address: 1 Deer Park Dr, Suite Q, Monmouth Junction, NJ 08852, USA