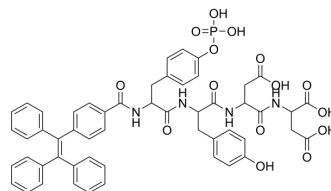


TPE-1p

Cat. No.:	HY-149865
Molecular Formula:	C ₅₃ H ₄₉ N ₄ O ₁₅ P
Molecular Weight:	1012.95
Target:	Phosphatase; Fluorescent Dye
Pathway:	Metabolic Enzyme/Protease; Others
Storage:	Please store the product under the recommended conditions in the Certificate of Analysis.



BIOLOGICAL ACTIVITY

Description

TPE-1p is a cascade-activated AIEgen-peptide probe. TPE-1p self-assembles in aqueous solution to exhibit bright fluorescence in response to alkaline phosphatase (ALP) and ChT-L. TPE-1p can be utilized to noninvasively assess the inhibition efficiency of a ChT-L inhibitor in cells^[1].

REFERENCES

[1]. Jiao Q, et al. Cascade-Activated AIEgen-Peptide Probe for Noninvasively Monitoring Chymotrypsin-like Activity of Proteasomes in Cancer Cells. *Anal Chem.* 2023 Jun 13;95(23):9097-9106.

Caution: Product has not been fully validated for medical applications. For research use only.

Tel: 609-228-6898

Fax: 609-228-5909

E-mail: tech@MedChemExpress.com

Address: 1 Deer Park Dr, Suite Q, Monmouth Junction, NJ 08852, USA