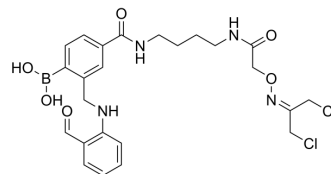


DCA-RMR1

Cat. No.:	HY-149872
Molecular Formula:	C ₂₄ H ₂₉ BCl ₂ N ₄ O ₆
Molecular Weight:	551.23
Target:	Biochemical Assay Reagents
Pathway:	Others
Storage:	Please store the product under the recommended conditions in the Certificate of Analysis.



BIOLOGICAL ACTIVITY

Description

DCA-RMR1 is a cross-linker. DCA-RMR1 elicits facile bicyclization of native peptides via N-terminus Cys-Cys cross-linking. DCA-RMR1 derivatizes RMR1 with 1,3-dichloroacetone (DCA)^[1].

REFERENCES

[1]. Reja RM, et al. Diazaborine-Mediated Bicyclization of Native Peptides with Inducible Reversibility. *Org Lett.* 2023 Jun 23;25(24):4489-4492.

Caution: Product has not been fully validated for medical applications. For research use only.

Tel: 609-228-6898

Fax: 609-228-5909

E-mail: tech@MedChemExpress.com

Address: 1 Deer Park Dr, Suite Q, Monmouth Junction, NJ 08852, USA