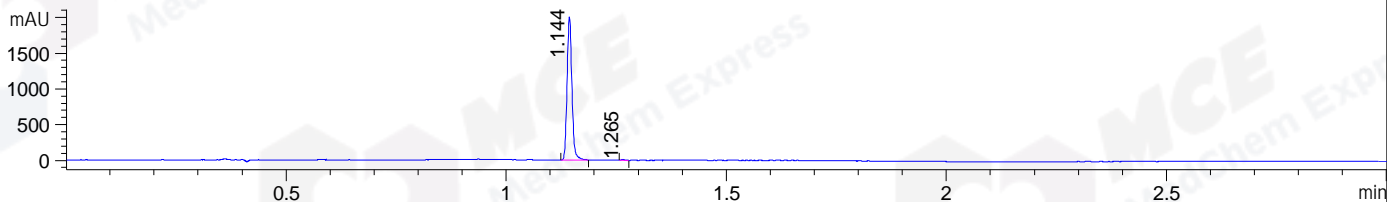
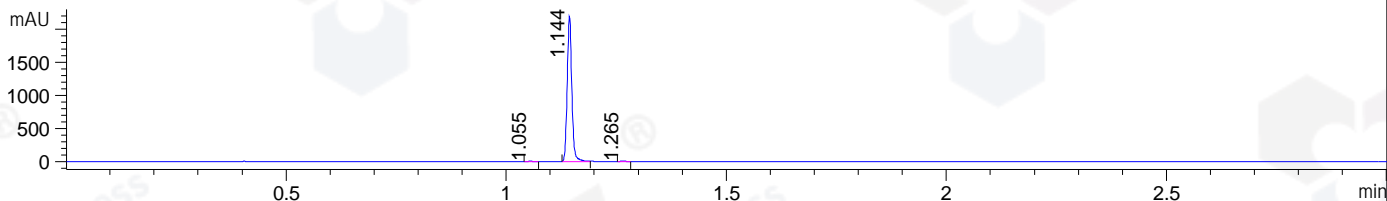


File ..DATA\2021\20210628\1435\BIZ2021-625-SCH17.D Tgt Mass (CHM):  
 Injection Date : 28 Jun 21 7:15 pm +0800 Seq. Line : 43  
 Sample Name : BIZ2021-625-SCH17 Location : P1-E-04  
 Acq. Operator : wkt\_2222 Inj : 1  
 Spec. Reported : MS Integration Inj Volume : 1 ul  
 Acq. Method : D:\Chem32\1\data\2021\20210628\1435\1-POS-3MIN-1.M  
 Analysis Method : D:\CHEM32\1\DATA\2021\20210628\1435\1-POS-3MIN-1.M  
 CAS NO. : 853299-52-2  
 Method Info : Mobile Phase: A: water(0.01%TFA) B:ACN(0.01%TFA)  
 Gradient: 5% to 95%B within 1.3 min  
 Flow Rate :1.8ml/min  
 Column :SunFire C18, 4.6\*50mm,3.5um A-RP-322  
 Oven Temperature : 45□

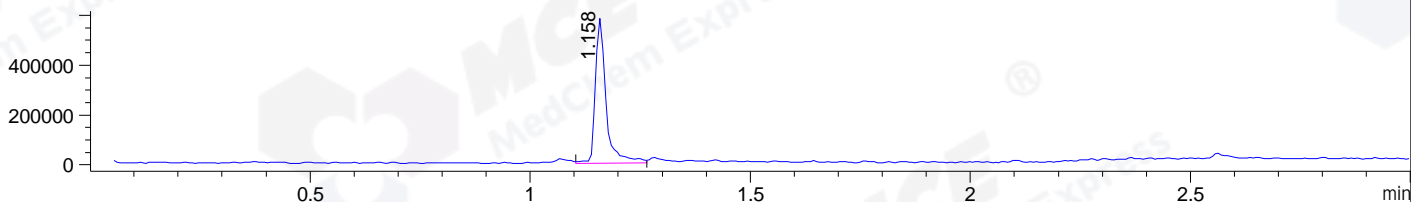
DAD1 B, Sig=214,4 Ref=off



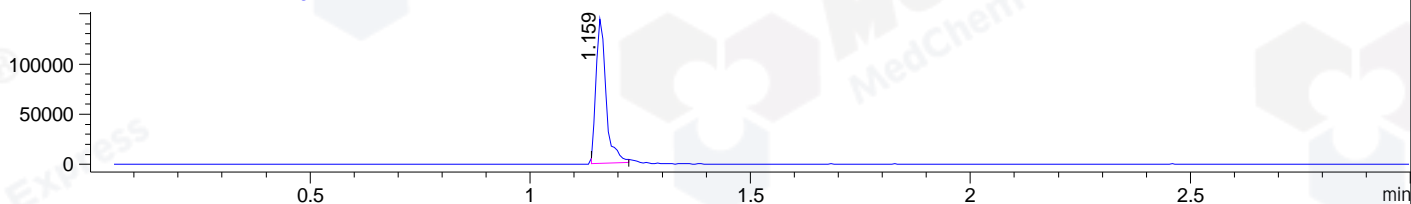
DAD1 C, Sig=254,4 Ref=off



MSD1 TIC, MS File ES-API, Pos, Scan, Frag: 70



Ion 516, MSD1 516, Target Mass 515 +H Positive, EIC=515.7:516.7



## Integration Results for DAD1 B, Sig=214,4 Ref=off

| RetTim | Width | Area    | Height  | Area% | MS(+) |
|--------|-------|---------|---------|-------|-------|
| 1.14   | 0.01  | 1539.13 | 2013.40 | 99.58 | 259   |
| 1.26   | 0.01  | 6.53    | 9.73    | 0.42  | 516   |

## Integration Results for DAD1 C, Sig=254,4 Ref=off

| RetTim | Width | Area    | Height  | Area% | MS(+) |
|--------|-------|---------|---------|-------|-------|
| 1.06   | 0.01  | 4.01    | 5.69    | 0.25  | 288   |
| 1.14   | 0.01  | 1601.85 | 2189.52 | 99.37 | 259   |
| 1.26   | 0.01  | 6.09    | 8.77    | 0.38  | 516   |

## Integration Results for MSD1 TIC, MS File

| RetTim | Width | Area      | Height    | Area%  | MS(+) |
|--------|-------|-----------|-----------|--------|-------|
| 1.16   | 0.03  | 989535.31 | 582691.56 | 100.00 | 259   |

Ret. Time: 1.16

<<<< POSITIVE SPECTRA >>>>

ES-API Positive

