

L-371,257

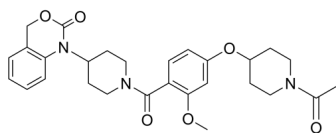
Cat. No.: HY-15010
Batch No.: 110323
CAS No.: 162042-44-6
Molecular Formula: C₂₈H₃₃N₃O₆

ANALYTICAL DATA

Theoretical: C(65.10%)、H(6.63%)、N(8.13%)

Result: C(65.13%)、H(6.54%)、N(8.21%)

Chemical Structure:



Caution: Product has not been fully validated for medical applications. For research use only.

Tel: 609-228-6898

Fax: 609-228-5909

E-mail: tech@MedChemExpress.com

Address: 1 Deer Park Dr, Suite Q, Monmouth Junction, NJ 08852, USA